

60 years

2014 ANNUAL REPORT

HAMILTON
COMMUNITY
FOUNDATION

History made, future intended.

2014 Financial Highlights

Record granting and community leadership spending at \$6.4 million

- A 60-year total of more than \$81 million

Total assets: \$155.8 million

- Highest ever and an increase of 14 percent over last year

Impact investing commitment of \$42 million

- Includes \$5 million available specifically for investments and loans to Hamilton charities, non-profits and social enterprises

Our Vision

A vibrant, inclusive Hamilton

Our Mission

To drive positive change by connecting people, ideas and resources

WHAT YOU'LL FIND INSIDE

| | |
|--|----|
| Message from the Board Chair and President & CEO | 5 |
| Sixty years: 1954 to 1963 | 6 |
| Responding to a critical need | 8 |
| Cooking up a brighter future for women in transitional housing | 9 |
| Love of community translates into meaningful results | 10 |
| <i>Read to Your Baby</i> offers a prescription for lifelong learning | 11 |
| Renowned actor demonstrates hometown love | 12 |
| A commitment to the community | 13 |
| 100 percent commitment | 14 |
| A shared history in Hamilton | 15 |
| Sixty years: 1964 to 1973 | 16 |
| Community leadership | 18 |
| Sixty years: 1974 to 1983 | 20 |
| Funds and contributors in 2013-2014 | 22 |
| Sixty years: 1984 to 1993 | 34 |
| Grants made in 2013-2014 | 36 |
| Sixty years: 1994 to 2003 | 42 |
| Financial highlights | 44 |
| Impact investing update | 49 |
| Sixty years: 2004 to today | 50 |
| Board members, volunteers and staff | 52 |
| Our 60th Anniversary Sponsor - Pioneer Energy LP | 55 |



MESSAGE FROM

the Board Chair and President & CEO

On this 60th anniversary of Hamilton Community Foundation, we are pleased to report a banner year, with approved grants of \$6.3 million, donations of \$6.6 million, record assets of \$155.8 million, and a host of community leadership initiatives that support our mission to drive positive change.

While we are thrilled with this year's results, we never forget, especially in this celebratory year, that they reflect the sum of the work of successive generations over six decades: donors who put their trust in the Foundation, boards whose foresight enabled us to weather economic storms, and community partners who carried out the front line work with innovation and compassion. Our new tagline "History made, future intended" pays tribute to this collective legacy and

invites others to join us in shaping the Hamilton we want for citizens today and tomorrow.

We thank retiring board members Dr. Jane Aronson, Dr. Patrick Deane, Matthew Green, Ruth Liebersbach and Dr. Gary Warner for their many contributions especially to shaping our vision of a vibrant, inclusive Hamilton. We are pleased that Gary continues as our 60th anniversary ambassador along with long-time volunteer Terry Yates. We also thank Pioneer Energy LP for their generosity as the signature sponsor for our 60th anniversary celebrations.

As you read through this annual report and the stories of what's happening and what's ahead, we hope you are inspired and confident that the best is yet to come.

Terry Cooke
President & CEO

Paul Gibel
Board Chair

In 1954 we invested in Hamilton

The seeds of today's Hamilton Community Foundation were sown in 1954 by a small group of people who created it based on a model they had seen in Winnipeg – Canada's first community foundation. They saw it as a new way to give back to the city they loved.

One of the founding board members in 1954 was James V. Young, whose leadership launched three generations of support for Hamilton through HCF. James' son Bill and his wife Joyce made a landmark gift to HCF in 2000. One of the largest charitable donations in Canada at the time, it transformed the Foundation's granting, leadership and ability to meet Hamilton's greatest needs.

Today, James' grandson Bill Young Jr. continues to encourage and support the Foundation in finding new ways to use its assets in service to our community, most notably through impact investing and other innovative social finance initiatives.

The Young legacy is just one example of the commitment that generations of many Hamilton families feel to their community and its future. Hamilton may change over the decades, but Hamiltonians remain steadfast in caring about their city and each other.

60
years



Responding to a critical need

Grant Story | Cutting treatment delays for abused children

It's hard to accept that children as young as three are being sexually abused. But that is a reality the Community Child Abuse Council faces squarely every day. They provide proven treatment, education, and prevention programs to Hamilton's abused children.

Timely treatment is transformative for children who suffer sexual abuse and the devastating effects of that betrayal of trust, says the Council's executive director Karen Smith. "The good news is that when children receive prompt treatment from our professional clinicians, they do recover from this trauma and live healthy, productive lives. We know that. But the longer they wait for treatment, the worse their symptoms get."

When the Council came to Hamilton Community Foundation and explained that referrals to their program were so high that children were waiting too long for treatment, we responded.

The Edith H. Turner Foundation Fund provided a grant. HCF also approached The Lillian and Marvin Goldblatt Family Fund, which has a similar focus on children and youth. Deeply moved by

the situation of these youngsters, this fund too stepped forward with additional support.

Together these grants allowed the Council to cut the waiting list by 70 percent – saving many young children lifelong turmoil.

HCF fundholders Pioneer Energy Foundation and the Losani Family Foundation Fund also generously support the Council, and Karen says she is grateful to HCF for shining light on this issue. Some donors have even offered help to raise awareness about the need to have stable resources for these essential services.

"The bigger picture is this," says Smith. "We can give kids their lives back when we're able to treat them early – but if resources don't allow that to happen, the future of our community suffers as much as these young people do. The long-term solutions to child abuse are a responsibility of the whole community. Support from HCF and its donors creates a vital ripple effect. By facing the reality of child abuse, they help us open a community conversation about how thriving children are essential for thriving communities."

Prompt treatment is critical to recovery from abuse

Cooking up a brighter future for women in transitional housing

Grant Story | When your order is catered by *At the Table: Recipe for Change*, you're getting a meal with a message

The name says it all, says Denise Doyle, CEO of the YWCA which launched and operates the business. It was inspired by a woman who told staff she had never eaten at a table with others before coming to the Y. "We never forgot her words," says Denise. "This is the beginning for women moving on to independent living. Food is a part of that."

The short-term goals of *At the Table* are to provide delicious, healthy, high-quality food to local organizations that require catering, including the Y's own programs, and to offer culinary skills development opportunities to women in transitional living. The big dream is to operate a café.

At the Table is a social enterprise, using for-profit business strategies to earn revenue that is used to achieve social and community outcomes. Money earned from catering supports women in the YWCA's transitional living program—a 65-bed bridge between homelessness and independent living that serves more than 150 women in Hamilton every year. The catalyst was a grant from the Marchese Health Care

50th Anniversary Legacy Fund at HCF to put together a feasibility study and business plan. "This small investment allowed the program to blossom," says Denise. "The more people hear the story, the more interested they get in the work we're doing, which has allowed us to leverage additional support." A recent grant from HCF's Edith H. Turner Foundation Fund will allow the YWCA to pay for food handling training and certification, increasing the employment skills of the women in transitional living.

At the Table proves there's a real appetite in the community for a service that combines gourmet eats with food for thought. The program is breaking even months before celebrating its first birthday—an achievement for any small business, but especially impressive in the hospitality industry.

Alternate funding models like *At the Table* help to sustain these kinds of programs. Government funding for transitional living is difficult to secure and homeless women need significant support

on their journey. "I used to worry about where they would get food," says Denise. "Today, thanks to *At the Table*, they're eating two meals a day at the YWCA."



Gourmet eats from *At the Table*

Love of community translates into meaningful results

Grant Story | The Dougher Community Fund grew from a quiet appreciation of life in Dundas

Grants from the fund are dedicated to enabling others to have the same opportunity, now and forever.

The donor had a single goal: to ensure future residents would enjoy the community’s many assets as she and her family had. It only made sense then that the first grant, in 2012, went to Dundas Community Services to reach out to the town to determine its highest needs. Focus groups, a community open house and an online survey pointed to priorities that included resources for seniors, accessibility for those with physical disabilities, poverty reduction, environmental education, youth engagement and access to the arts. As a result, these became the focus areas for the Dougher Community Fund.

Since this review, the fund has supported 15 projects, including playground naturalization, family art days, restoration of the Desjardins Canal, an information program for seniors, a youth centre and an assistive devices program.

This year, a grant to the 36-year-old Dundas Valley Symphony Orchestra will help its music reach new ears. “We want to attract a broader

audience and expand our repertoire by connecting with choral groups,” says president Olga Hencher. The grant will be used to hire vocalists and coaches, purchase music and pay for additional rehearsal space to prepare for the group’s annual lineup of six free concerts.

Another grant is providing a part-time community garden co-ordinator for four Dundas affordable housing sites. “We want to increase food security, reduce isolation and build capacity among Dundas residents, especially seniors,” says Matt Bowen of City Housing Hamilton. “A staff person is critical to getting the project off the ground in a way that meets tenants’ needs and is sustainable.” When the project wraps up this fall, tenants will have a how-to handbook, a cookbook and connections with other food security programs, such as the Good Food Box, to see them through until the next growing season.

With its “forever focus” on the quality of life in Dundas, The Dougher Community Fund is a textbook case of helping people give in a way that has meaning to them and impact in their community.



The Dundas Valley Symphony Orchestra

Read to Your Baby offers a prescription for lifelong learning

Grant Story | A physician’s prescription for learning invites parents to share the gift of literacy with their kids

There isn’t a pill to improve literacy. But a new program is offering a prescription that’s getting families off to a great start.

Read to Your Baby provides family physicians with the tools to start important conversations with parents about reading, including a free picture book (available in English and French), a fun “prescription” for daily reading and an invitation to get a library card for the child. It all takes place at the 18-month well baby visit.

“We’re educating parents as the primary educators of their children,” says Evette Sauriol, early literacy specialist with Affiliated Services for Children and Youth. “We believe the gift of literacy supports children in reaching their full potential.” Research shows reading to preschoolers gives them the literacy skills necessary for early school success. Story-time also strengthens the parent-child bond.

The program is working: an evaluation by the Best Start Early Years team showed that more than 80 percent of parents who

weren’t reading to their child previously said being given the book has made a difference to their literacy activities.

An HCF grant will allow *Read to Your Baby* to expand from 49 to 150 physicians—covering half of the babies born in the city each year—as well as support an awareness initiative to ensure long-term sustainability of the program. HCF also connected *Read to Your Baby* to First Book Canada, an organization that provides access to new books for children in need. Additional funding for book purchases has come from Telling Tales. The prescription pads were developed by the Canadian Paediatric Society and printed by the Offord Centre for Child Studies.

The program is founded on strong partnerships with healthcare, early learning and education groups and the library. Dr. Jean Mullens, a family physician with the Hamilton Family Health Team, is a true champion. “Parents are thrilled to get the book from our nurses and are usually reading it to their baby when I come into the room,” she says. While some of the families

Jean sees may be economically disadvantaged, she stresses that this is a universal program. “All parents need the reminder to read to their babies.”



photo courtesy Read to Your Baby

Dr. Jean Mullens with a *Read to Your Baby* kit

Renowned actor demonstrates hometown love

Donor Story | John Frid's bequest culminates generations of support from one of Hamilton's most community-minded families

John Frid – also known by his stage name Jonathan Frid – was an accomplished actor with a 50-year career that began in a school play at Hillfield School, the precursor to Hillfield Strathallan College.

He pursued his love of acting at the Hamilton Players' Guild and, after serving in the Royal Canadian Navy during WWII, John graduated from McMaster University in 1948. He went on to the Royal Academy of Dramatic Arts in London and later to the Yale School of Drama.

To the public, he was best known for his role as vampire Barnabas Collins in the gothic TV daytime drama *Dark Shadows* that aired 1,225 episodes between 1966 and 1971. He received a reported 6,000 fan letters a week at the height of the show's popularity and continued to attend *Dark Shadows* festivals throughout his life. But that role was just one aspect of a distinguished career that included starring roles in theatre and television in the U.S., Canada and England, opposite stars like Katharine Hepburn and Jean Stapleton.

Although he spent much of his life in New York City, he remained a Canadian citizen and kept strong ties to Hamilton, ultimately moving back to Ancaster in 1994. Says his nephew Donald Frid, "I think he wanted to be close to family and friends in the latter stages of his life. Despite living away for so long, he knew his heritage was here. He was very proud of the city."

John believed in the Foundation as a way of supporting a vibrant community. His father Herbert Frid was one of the founders of HCF in 1954 and his mother Flora served on the Foundation's Board in the 1960s. Their generous philanthropy continues to this day through the Community Fund's Herbert P. & I. Flora Frid Fund. Their son is following in their footsteps.

"My uncle John was warm, encouraging, and generous, like his mother was," says Don.

John established his fund in 2002 and enjoyed seeing the difference his gift made during his lifetime. His gift ensures that the John H. Frid Fund will continue that legacy to the Hamilton community he loved.



Vampire Barnabas Collins, as played by Jonathan Frid

A commitment to the community

Donor Story | The Creaghans believe in small changes making big differences to build and nurture a community

Michael and Louise Creaghan share the belief that commitment to family then community is crucial. Both have volunteered extensively throughout their lives and know first-hand that working with others on grassroots projects gives people a sense of caring for their neighbours. Whether it's through daycare, school organizations, sports, church and volunteer associations, people need to find ways to contribute. They point to the Cathy Wever Elementary School in north Hamilton as a good example of the difference community involvement can make for a neighbourhood. The steps may be small and it may take time to see results, but the approach works.

The couple both spent long careers in education in Hamilton – Michael as a teacher and guidance counsellor; Louise as an English and physical education teacher and then, after raising their own children, as an ESL teacher giving young new Canadians 180 minutes each day of, as she calls it, "fundamental survival English." After working in many Hamilton schools, they retired together from Sir John A. Macdonald Secondary School in the downtown.

It's natural that their philanthropic passion is helping nurture community vitality. The Creaghans approached Hamilton Community Foundation with a general sense of what they wanted to do through their fund: provide support to organizations that are building and improving the community. To achieve this, Michael and Louise rely on the Foundation's research and knowledge to propose specific projects that target community priorities.

"The Foundation staff identify urgent needs and present them to us, knowing the kinds of change we want to support," says Louise. Examples of their contributions include support for the Native Women's Shelter renovations and the Neighbourhood Leadership Institute that HCF has launched to encourage and train local grassroots leaders. As Michael points out, their investment has often been the catalyst for others to provide support as well.

The Creaghans rely on the skill and sensitivity of the Foundation's staff, their in-depth knowledge and understanding of community needs and opportunities.

They also commend Hamilton Community Foundation's ability to provide co-operation and leadership to other organizations in a non-partisan way.



Michael & Louise Creaghan

100 percent commitment

Donor Story | We've always known that HCF staff are committed to this community

An outstanding measure of that commitment: they all give to Hamilton Community Foundation and have for many years.

"It hammers home to me how dedicated the staff are to HCF's mission," says Board chair Paul Gibel. "There are other places they could work with their great skills, but they are fully engaged in what we are trying to achieve. It's more than a job. They prove that with their work, and they prove it with their financial contributions. As chair, it gives me a tremendous feeling of confidence."

The staff fully embrace the idea that anyone can be a philanthropist and the Foundation can meet anyone's charitable goals. Each employee gives to the cause he or she cares most about, supporting more than a dozen funds overall.

"We believe in the work we do," says Morag Halsey, whose voice has welcomed callers to HCF for most of her 14 years at the Foundation. "It just makes sense to contribute financially too." Morag's special cause is children and she

directs her gifts to the Hamilton Spectator Summer Camp Fund. She remembers the challenges of being a single parent and appreciates the opportunities the Summer Camp Fund gives disadvantaged kids every year.

Anne Lupkoski has worked at HCF for 25 years, assisting three CEOs. She supports the Youth Advisory Council (YAC) program. Her own children have participated over the years and she is passionate about the growth she sees in them and others because of the YAC opportunity.

As grants manager, Sharon Charters knows Hamilton's needs well. She also knows from family experience the importance of mental health initiatives, so she chooses to donate to the Angel Fund, started by Shirley Elford, to focus on programs in this area.

"I think each of us gets a sense of fulfillment from supporting the priority that's closest to our heart," says Sharon. "It's something we all feel as staff contributors, just the way other donors do."

A shared history in Hamilton

Donor Story | ArcelorMittal Dofasco is one of a growing number of companies establishing funds with HCF

ArcelorMittal Dofasco Inc. has been a key player in Hamilton's history since 1912 and is known for over a century of service to this community. This year, the company has established a new resource for its corporate philanthropy: the ArcelorMittal Dofasco Fund at Hamilton Community Foundation.

Continuing its long-standing tradition of building community strength, ArcelorMittal Dofasco's new fund aims to invest in organizations that enrich the community and change the lives of children and youth in the Hamilton region. Access to inspiring programs, imaginative arts, nourishment, and nurturing health care are some of the youth priorities.

"We know the importance of sparking a child's curiosity," says Tony Valeri, the company's Vice President of Corporate Communications and Public Affairs. "It can be the seed of great things to come. Children need only a glimpse of what's possible, followed by the support to make it happen. Hamilton can be the best place to raise a child and we are proud to play a role in making this happen."

"Hamilton Community Foundation and ArcelorMittal Dofasco share a long history in Hamilton and some

crucial connections," says HCF's President & CEO, Terry Cooke. "For many of the Foundation's 60 years, Dofasco has offered leadership to us in the form of Board members. Trixie Sherman, spouse of past-chairman and CEO Frank H. Sherman, was the first to serve in 1965 and many others have contributed their time and expertise since."

In addition to funding current grants, the newly established fund is permanently endowed for long-lasting impact.

"Like our company, Hamilton Community Foundation has expertise in creating innovative solutions and partnerships to advance our community," says Tony Valeri. "We're looking forward to working together to continue building the community's strength."

"We are thrilled to be part of ArcelorMittal Dofasco's philanthropic outreach," says Terry Cooke. "The company has a history of charitable giving in the community that is legendary. We are honoured to be a part of it."



Hamilton
Community
Foundation staff

Excited about
ArcelorMittal Dofasco's
community investment
at Supercrawl 2013



A Hamilton landmark leaves its legacy

1964 to 1973 Robinson's department store was a landmark for decades in Hamilton and many people fondly remember shopping there in the 1960s and 70s.

The stores are gone now, but the legacy of the founding family lives on at Hamilton Community Foundation.

When Kathleen Robinson McBride, the daughter of the department store's founders, passed away she left her estate to HCF's Community Fund. Her generous bequest was the largest unrestricted gift the Foundation had ever received. To this day, it fulfills her intentions of addressing the community's highest needs and priorities.

Kathleen and her husband Robert McBride also had a daughter, Peggy, who created a private foundation in 1966. She later transferred her foundation to HCF and in honour of her long-time lawyer, Doug McCallum, who had devoted much time and energy to her foundation, it was renamed the McCallum, McBride Fund. Its annual grants for environmental issues and abused women and children touch hundreds of lives in Hamilton every year.

60
years



Community leadership

Leadership on issues that affect Hamiltonians is one way the Foundation works to improve the quality of life in this city.

Building healthy neighbourhoods

For over a decade, HCF's Community Fund has focused on reducing poverty and improving the quality of life in challenged neighbourhoods. This year, working in conjunction with the City of Hamilton's Neighbourhood Action Strategy, the fund focused on enabling residents to realize the action plans they have developed for their communities. Representing the input of hundreds of citizens, the plans touch on activities as varied as beautification, improved safety, traffic calming and block parties which help neighbours to meet and engage in community building.

Our work also included spearheading the Neighbourhood Home Improvement Program which engaged businesses, non-profits, the City and provincial government, demonstrating the strength of partnerships focused on neighbourhoods. HCF continues to fund the services of community development workers who help resident leaders engage and connect neighbours with each other.

Neighbourhood Leadership Institute

This pilot program aims to enhance the skills of neighbourhood leaders. This year the program has evolved to include more community organizations in creating and delivering training

content alongside Mohawk College. Mohawk has also certified the program, enabling graduates to receive a college credit. Researchers from McMaster University are evaluating the program to determine how it can be most effectively delivered including the potential for rolling it out more broadly across Hamilton.

Increasing access to post-secondary education

Recognizing the impact that changes such as higher rates of literacy, high-school graduation and post-secondary access would have on our community, HCF is increasingly focused on education as a means to a vibrant, inclusive Hamilton.

We are completing our research on what a "Promise" program—an initiative to support graduates of publicly funded schools to go on to post-secondary education—could look like in Hamilton. A key finding to date is that finances are only one barrier to successful post-secondary access and completion, so we are expanding our research to better understand current thinking on how to address the range of barriers. Our partners include Dr. Doug Willms, a respected international scholar on the effects of poor early literacy in future learning, as well as the Higher Education Quality Council of Ontario. The Council is a provincial agency whose mandate

includes enhancing access to Ontario colleges and universities. Its extensive research covers many influencing factors, including the community context — those aspects that are unique to any one jurisdiction. Based on this knowledge, which will include community input, we expect to design a "made-in-Hamilton" intervention.

Hamilton Roundtable for Poverty Reduction

The Foundation and the City of Hamilton continued to co-convene the Hamilton Roundtable for Poverty Reduction which focuses on system-level change to reduce and eliminate poverty. This year, the Roundtable launched *Speak Now Hamilton*, a speakers bureau that has brought together 25 people, who have diverse but direct experiences with poverty, to share their stories. Members have received training in public speaking, media engagement and public policy and are available to speak at schools, faith organizations, service clubs and to business audiences. The goal is to inform, educate and break down stereotypes.

The Roundtable's action on Living Wage gained momentum in 2013 through efforts to engage private, public and non-profit sector employers in the value of lifting all workers above the poverty line. Following the Hamilton-Wentworth District School Board's leadership in becoming Ontario's first public sector employer to adopt a living wage policy, several local businesses have committed themselves as living wage employers. The Roundtable continues to engage all levels of government around the need to invest in

poverty reduction, and to support adequate income security programs and a livable, vibrant community.

Hamilton Action Revitalization Campaign

The Action Campaign is a project designed to accelerate James Street North revitalization. Citizen engagement is central to the Action Campaign, and will integrate existing community plans and projects, with the goal of catalyzing redevelopment in this area and providing a model for other areas of the city. Possible projects include neighbourhood parks, food gardens, a greenway corridor along the railway tracks and remediation of waterfront industrial lands. The project manager is Evergreen CityWorks, a national charity whose mission is fostering sustainable infrastructure in Canada's cities. Evergreen has conducted a number of Hamilton projects and is best known for the Brick Works, a former brick quarry and factory in Toronto's Don Valley that has been converted into an urban environmental park.

The Action Campaign was sparked by a gift to HCF from The Michael Young Family Foundation, and a contribution from The Young Fund, leveraging additional funds from the City of Hamilton. James Street North was selected as the ideal location to advance many of the City's strategic plan elements including developing the downtown and waterfront. The area is also central to two of the communities in the Neighbourhood Action Strategy where HCF has been working for more than a decade.

The first fund is still powerful

1974 to 1983 The first fund established outside of the Community Fund, was the Chaney-Ensign Bursary Fund in 1976.

Genevieve Chaney and Cordelia Ensign were twin sisters, both teachers, and their intent was to help Hamilton young people who were in serious financial need to access higher learning.

The impact of this fund is hard to overestimate: close to 700 local students have received support over the years, without which they might never have progressed to post-secondary education. They include scientists, lawyers, teachers, business leaders, and countless others who continue to have an influence in Hamilton today.

Hamilton lawyer Sandra Stephenson and her three sisters all received Chaney-Ensign bursaries after their father suffered a stroke and the family's sole source of income fell dramatically. Sandra, a past HCF chair, was recently awarded the prestigious Law Society Medal recognizing those who have "advanced the core principles of access to justice and equality through their unique contributions to their communities."

Almost 40 years since its creation, the Chaney-Ensign Bursary Fund continues to support the educational aspirations of young Hamiltonians – an outstanding example of the power of the community foundation model.

60
years



Funds and contributors in 2013-2014

People who give to Hamilton Community Foundation share the desire to make a difference for Hamilton, forever. Gifts to HCF are pooled and invested; investment income is the primary source for grants made.

As a Foundation donor, you can create your own fund or give to an existing one. We are pleased to work with you and your professional advisor to find the approach that meets your goals and circumstances. Please call us at 905-523-5600 or visit www.hamiltoncommunityfoundation.ca for more information.

Amounts shown reflect total accumulated gifts to each fund.

Community Fund

Giving to the Community Fund provides HCF with the greatest flexibility in responding to the community's needs. Gifts of any amount are welcome. Donors whose accumulated endowed gifts total \$5,000 may choose to have a named fund within one of the following Community Funds.

Community Fund/Unrestricted funds

This fund addresses the highest charitable priorities in the community. The individual funds are listed below.

| | | | |
|------------------------------|---------|----------------------------------|-----------|
| Donald J. Allan Fund | 103,514 | William F. Brand Fund | 8,404 |
| Marjorie L. Allan Fund | 5,000 | Marnie & Bill Brehm Family Fund | 23,500 |
| Doris M. Allen Fund | 172,918 | Dorothy & Travice Broadbent Fund | 7,000 |
| Caroline May Alvey Fund | 118,000 | Mary & Earl Brooks Fund | 1,130,000 |
| Frances W. Ambrose Fund | 5,600 | Ernest & Ruth Brunton Fund | 20,000 |
| Helen Mary Archambeault Fund | 25,316 | Irene Caldwell Memorial Fund | 10,000 |
| Lillian Boyd Barnby Fund | 10,000 | Henrietta F. Campbell Fund | 104,959 |
| Gilbert P.V. Belton Fund | 175,088 | Donald & Alice Cannon Fund | 9,225 |
| Horace A. Bennett | 10,000 | Charlotte Cauley Fund | 34,987 |
| Anne M. Biggar Fund | 460,327 | Dorothy Cauley Fund | 78,831 |
| Doreen & Gordon Birk Fund | 98,409 | M. Jessie Chagnon Fund | 71,196 |
| Sandra & John Black Fund | 104,330 | Harold E. Clarke Fund | 86,120 |

| | |
|--|--------------|
| Florabel Condry Fund | 25,000 |
| Cooke Family Fund | 12,850 |
| Petra Cooke Memorial Fund | 22,650 |
| Donald A. Cooper Fund | 40,126 |
| Ralph W. & Evelyn J. Cooper Fund | 151,000 |
| Ian & Donna Cowan Fund | 5,350 |
| Robert D. Crockford Fund | 14,075 |
| Vangie M. Crosthwaite Fund | 40,000 |
| Renate & Bob Davidson Fund | 9,000 |
| A. May Davis Fund | 41,598 |
| E. Francis Dennee Fund | 24,322 |
| Alphonse Dirse Fund | 48,344 |
| Vera M. Elwin Fund | 536,235 |
| Fell Family Fund | 30,065 |
| Eleanor Foster Fund | 869,072 |
| Herbert P. and I. Flora Frid Fund | 325,000 |
| John H. Frid Fund | 547,369 |
| Gallagher Family Fund | 52,700 |
| Margaret & William Gilmour Fund | 8,380 |
| Robert C. & L. Ann Glass Fund | 70,000 |
| Erma Z.L. Goering Fund | 888,437 |
| Alice Redman Gooch Fund | 25,025 |
| Dr. Ronald P. Graham Fund | 16,814 |
| Averil Gray & Florence Gray Fund | 1,172,308 |
| J.M. Walter Hahn Fund | 5,000 |
| Elizabeth Mary Hamilton Fund | 30,000 |
| Christina I. Hammant Fund | 250,000 |
| Helen Gertrude Harrison Fund | 34,222 |
| Robert J. & Joan Harrison Fund | 10,266 |
| Lulu Blanche Hart & Harry Utter Hart Memorial Fund | 778,782 |
| Mary E. Hatch Fund | 116,000 |
| Margaret Anne Hayward Fund | 797,598 |
| Donald H. Henderson Fund | 408,597 |
| Gordon & Ethel Holmes Fund | 97,572 |
| Erie Hossack Fund | 58,638 |
| Clare B. Hunter Fund | 13,079 |
| Mildred E. Hunter Fund | 100,878 |
| Elsie M. Husband Fund | 12,300 |

| | |
|---|--------------|
| Francis Spence Hutton Fund | 32,650 |
| Ralph E. Ingraham Fund | 16,017 |
| W. Jones Fund | 25,920 |
| William Gordon Kitchener Fund | 60,000 |
| Lakin Family Fund | 8,850 |
| Langs Family Fund | 67,639 |
| Daniel T. Lawrie Fund | 115,529 |
| Mabel D. Leadlay Fund | 75,891 |
| Elizabeth Lee Fund | 11,775 |
| Russell & Mae Lindley Fund | 10,400 |
| Dorothy I. Linfoot Fund | 20,588 |
| Evelyn Patricia Lyons Fund | 5,000 |
| Cameron K. MacGillivray Fund | 9,325 |
| Josephine Magee Fund | 204,057 |
| D. Argue Martin Fund | 20,340 |
| Dr. Carl Martin Memorial Fund | 5,000 |
| Kathleen L. McBride Fund | 11,632,794 |
| Robert P. McBride Fund | 1,636,012 |
| The Samuel & Dora McFarlane Fund | 14,000 |
| Brenda & Reg McGuire Fund | 5,150 |
| Lindsay M. McLennan Fund | 78,022 |
| Flora L. McNeil Fund | 30,165 |
| Jack McNie Fund | 26,000 |
| Meredith Family Fund | 14,550 |
| Frederick J. Mills Fund | 26,189 |
| Eleanor Jean Milton Fund | 63,610 |
| Alice Vera Morgan Fund | 338,065 |
| Brenda Morris Fund | 5,000 |
| Mount Hamilton United Church Legacy Fund | 20,000 |
| Catherine C.H. Murray Fund | 50,050 |
| Annie S. Nieman Fund | 36,081 |
| Dr. Alexander A. Numbers Fund | 5,844 |
| Peter & Rose Marie Palmer Fund | 5,215 |
| Laurence Cholwill Patterson Fund | 351,146 |
| Stewart Philp Fund | 45,000 |
| James & Mary Phin Fund | 106,545 |
| Project Sunday Fund | 8,771 |
| Ethel H. Prouse Fund | 181,684 |

*Funds shown in **bold** were established in 2013-2014.*

| | |
|--|---------|
| Charles & Catherine Ralph Fund | 43,131 |
| James D. Redmond Fund | 6,033 |
| Edna E.R. Reeves Fund | 78,766 |
| Reynolds Family Fund | 131,939 |
| Samuel Ringer Fund | 70,586 |
| Edna Robertson Memorial Fund | 29,000 |
| Royal Hamilton College of Music Faculty Fund | 5,963 |
| Jessie Rumney Fund | 10,000 |
| Joan W. Rutherford Fund | 5,000 |
| Bertha Savage Fund | 47,806 |
| Martha McKinnell Serrels Fund | 94,682 |
| John Shea Memorial Fund | 8,387 |
| Eleanor M. Smith Fund | 10,000 |
| Grace J. Smith Fund | 13,030 |
| Patricia Eileen Smith Fund | 5,150 |
| Sarah Smith Fund | 230,729 |
| William S. Sparham Fund | 25,236 |
| Robert George Sparre Fund | 34,410 |
| The Spectator Fund | 10,000 |
| Marnie Spears Fund | 16,820 |

| | |
|--|-----------|
| Ruth G. & Fred J. Spencer Fund | 22,000 |
| Leanora M. Spicer Fund | 26,600 |
| Evelyn & Richard Geraghty Storms Memorial Fund | 25,000 |
| Mabel Beatrice Studd Fund | 15,000 |
| Alfred Charles & Pearl Gertrude Swanwick Fund | 200,000 |
| A.H. Tallman Bronze Co. Ltd. Fund | 21,790 |
| Vincenza Travale Fund | 16,200 |
| Margaret E. Tschetter Fund | 383,739 |
| Howard & Edna Tugman Memorial Fund | 100,000 |
| Eulalia D. Wall Fund | 170,977 |
| West-Moynes Fund | 8,500 |
| Gladys A. Whittaker Fund | 26,205 |
| Noreen & Seymour Wigle Fund | 15,000 |
| Marjorie Wild Fund | 30,666 |
| James & Irene Wilson Fund | 6,000 |
| Jack A. Winser Fund | 155,007 |
| Anonymous and other gifts combined | 1,385,348 |

Community Fund/Arts and culture endowment funds

This fund addresses needs and priorities in the arts and cultural sector in Hamilton. The first \$1 million of gifts will be matched by the Foundation. As of March 31, 2014, there have been no contributions to this fund.

Community Fund/Environment endowment funds

This fund supports a range of initiatives and organizations that are key to Hamilton’s environmental well-being. The first \$1 million of gifts will be matched by the Foundation. As of March 31, 2014, gifts totalling \$316,007 have qualified for a matching contribution. The individual funds are listed below. The amounts listed include matching funds.

| | |
|--|---------|
| Robert D. Crockford Fund | 10,120 |
| Irene Emily Lowes Fund | 21,494 |
| U.S. Steel Canada Environment Endowment Fund | 600,000 |

| | |
|---------------------------|-----------|
| The Young Fund | 15,145 |
| Other gifts under \$5,000 | 6,245 |
| Fund matched gift total | \$653,004 |

Field-of-interest funds

These funds enable donors to support a specific interest area, e.g. the environment, children’s needs, the arts, etc. The Board of Directors selects the most appropriate recipients each year.

| | |
|---|-----------|
| Ike & Shahnaz Ahmed Foundation Fund | 51,650 |
| The Alice Jean Ainsworth Memorial Fund | 1,711,648 |
| Nelson Allan Fund | 141,040 |
| The Angel Fund* | 117,405 |
| Mary Lauder Cassidy Fund | 126,142 |
| Community Health, Education & Research Fund | 1,054,547 |
| Dorothy & Frank Bliss Fund | 508,839 |
| McGregor Clinic Fund | 118,478 |
| Mary S. & James P. Phin Respiratory Disease Research Fund | 426,180 |
| Giovanni & Grazia Criminisi Literacy Fund* | 31,135 |
| Delaware Fund | 360,552 |
| Dougher Community Fund | 2,409,200 |
| Shirley M. Elford Gift of Today Fund | 112,900 |
| Russell I. Elman Fund | 233,473 |
| First Place, Hamilton Tomorrow Fund | 236,075 |
| Foxcroft Family Youth Fund | 37,200 |
| Betty & Jack George Family Fund | 35,060 |
| Gibson Trust/Town of Flamborough | 30,885 |
| Edward & Gladys Halloran Memorial Fund | 808,885 |
| Hambro Fund | 40,000 |
| Barbara & Bob Harwood Fund | 104,903 |
| Florence E.S. Hutton Fund | 523,907 |
| Arthur & Helena Lemon Fund | 75,000 |
| Jane C. LeWarne Fund | 15,000 |
| Antonina Lombardo Fund | 145,000 |

| | |
|--|---------------|
| Ray Lowes Environmental Fund | 455,716 |
| Marchese Health Care 50th Anniversary Legacy Fund | 50,000 |
| George & Shirley McBride Foundation Fund | 1,062,576 |
| Carolyn A. Milne Leadership Forum Fund | 46,662 |
| Barbara North Fund | 25,000 |
| Note-Able Music Fund | 59,030 |
| Pioneer Energy Fund* | 1,038,055 |
| Alfred & Joan Robertshaw Memorial Fund | 609,050 |
| Royal Canadian Humane Association Fund | 69,233 |
| School Sisters of Notre Dame Legacy Fund | |
| Jeanne Scott Fund* | 27,568 |
| Bill & Tina Seale Fund | 123,120 |
| The Glenn & Sidney Sellick Fund | 10,000 |
| Lillian M. Shaw Fund | 166,713 |
| W. Robert & Marion S. Shivas Conservation Trust Fund | 280,547 |
| Charles & Ret Swire Fund | 154,835 |
| Fund for Underprivileged Children | 438,525 |
| The Van Dusen Fund* | 465,601 |
| Joan C. Watt Memorial Fund | 38,000 |
| Women 4 Change Fund | 103,918 |
| Kenneth Boothe Young & Marie Catherine Young Fund | 1,294,919 |
| Youth & Philanthropy Fund | 105,008 |

* These funds contribute to the Community Fund/Unrestricted funds

Ontario Endowment for Children & Youth in Recreation Fund

The amounts listed include funds matched by the Province of Ontario until March 2002 to encourage the participation of children and youth in recreation.

| | | | |
|---|---------|--|-------------|
| The Emma Templeton Fund | 293,116 | PricewaterhouseCoopers LLP Hamilton Children and Youth Millennium Fund | 10,500 |
| The Mildred E. Hunter Fund | 163,626 | The Deslauriers Fund | 10,200 |
| The Hamlin Family Fund | 100,000 | Judith & Peter McCulloch Fund | 10,200 |
| Anonymous Fund | 75,624 | Bank of Montreal Fund for Children & Youth in Recreation | 10,000 |
| Mr. & Mrs. Colin S. Glassco Fund | 40,000 | The CHML Children’s Fund | 10,000 |
| The Junior League Centennial Endowment Fund for Youth | 40,000 | The Clark Family Fund | 10,000 |
| Pioneer Energy Fund for Children & Youth | 40,000 | Gallagher Family Fund | 10,000 |
| The David Gow Fund | 20,000 | Morgan Firestone Foundation Fund for Youth | 10,000 |
| Hamilton – Hydro Electric Company Fund | 20,000 | Zonta Club of Hamilton #1 Fund | 10,000 |
| TD Bank Financial Group Fund | 14,000 | Other gifts under \$5,000 | 90,734 |
| The Foxcroft Family Fund | 12,000 | Fund matched gift total | \$1,000,000 |

Donor-advised funds

These funds enable donors to recommend the charitable organizations or programs to receive grants.

| | | | |
|---|-----------|--|----------------|
| Hugh C. Arrell Memorial Fund | 11,638 | Mildred Dixon Holmes – Youth Orchestra Fund | 366,278 |
| Ella Baird & Grace Baird McQueen Memorial Fund/A.J. McQueen | 27,000 | Hutton Family Fund* | |
| W.L. Carpenter Memorial Fund* | 2,256,064 | Kirkpatrick Fund | 51,350 |
| Michael Chamberlain Fund | 241,055 | Lawyers’ Legacy for Children | 198,309 |
| Clark Family Foundation Fund | 981,500 | Losani Family Foundation Fund | 163,125 |
| Lois Evans Natural Heritage Fund | 80,000 | John & Esther Marshall Memorial Fund | 220,409 |
| Elham & Joseph Farah Family Foundation Fund* | 50,250 | The Martin Foundation Fund | 1,210,653 |
| Fengate Community Foundation Fund* | 1,000,000 | Mayberry Family Fund | 154,500 |
| The Ron & Gina Fraser Endowment Fund | 25,000 | McCallum, McBride Fund | 928,494 |
| The Gilmour Fund | 183,204 | Carolyn & Paul Milne Fund | 37,105 |
| Tara Lynn Giuliani Foundation Fund | 214,254 | Audrey & Alan Moffett Fund | |
| Lillian & Marvin Goldblatt Family Fund | 200,000 | Mark & Barbara Nimigan Fund | 106,519 |
| Heather & Ross Hamlin Fund* | 8,678,151 | Kathleen C. Nolan Education Fund | 35,235 |
| Heels Family Vocal Award Fund* | 147,144 | John & Mary Reesor Fund | 150,000 |
| | | Ed Smee Conserver Society Environmental Fund | 33,953 |

| | | | |
|---|--------|---------------------------------|------------|
| Glen & Debra Swire Fund | 48,100 | Edith H. Turner Foundation Fund | 8,279,932 |
| Thorne Family Fund | 32,276 | Williams Family Fund* | 66,000 |
| Tran Family Fund* | 31,000 | The Young Fund* | 40,534,900 |
| Karen & Peter Turkstra Family Foundation Fund | | Several anonymous funds | 711,679 |

Designated funds

These funds have been established to benefit specific charities named by the donor.

| | | | |
|---|-----------|--|---------|
| Douglas J. Clark Fund* | 100,000 | PHOG Endowment Fund | 311,220 |
| Cygnus Fund | 104,300 | Samaritans’ Tithe Fund | 244,967 |
| Walter & Mildred Danby Fund* | 352,336 | Stoney Creek Health Fund/ Dr. Bob & Mildred Kemp | 561,583 |
| Frank Charles Miller Fund* | 1,260,912 | United Way Fund/Kenneth R. Walsh | 144,291 |
| Phenix Fund for Animal Welfare | 107,896 | | |
| James P. & Mary S. Phin Charitable Fund | 177,575 | | |

Scholarship and bursary funds

These funds assist and encourage promising students, including those challenged by education costs.

| | | | |
|---|---------------|---|---------|
| General Bursary Fund/Genevieve A. Chaney & Cordelia C. Ensign | 509,486 | Lee Hepner Award Fund | 17,813 |
| Cowan Family Fund | 25,000 | Mildred Dixon Holmes – Artist of the Year Fund | 30,000 |
| James Darby Bursary Fund | 410,301 | Russell & Elizabeth Lindley Fund | 145,370 |
| Eugene B. Eastburn Fellowship Fund | 511,438 | Music Bursary Fund | 38,304 |
| Howard Fairclough Organ Scholarship Fund | 51,922 | Rundle Foreign Study Bursary | 32,070 |
| Geritol Follies Bursary Fund | 118,175 | John E. VanDuzer Scholarship Fund | 27,118 |
| Daniel Giannini Fund | 958,562 | Albert & Betty Walters Fund | 57,488 |
| Christina Hamilton Scholarship Fund | 26,734 | Jervis B. Webb Company of Canada Scholarship Fund | 200,000 |
| William Allison Haynes Fund | 20,700 | Ross F. Webb Bursary Fund | 40,000 |

Agency endowment funds

These charitable organizations have established funds to provide a source of income to carry out their work.

| | | | |
|---|---------|--|----------------|
| AbleLiving Services Inc. – Mary Traini Legacy Fund | 81,557 | Hamilton Public Library – Library Legacy Fund | 413,491 |
| Art Gallery of Hamilton – Building a Legacy Fund | 253,678 | Interval House (Hamilton) Freedom and Hope Fund | 90,080 |
| Catholic Children’s Aid Society – Ralph and Rose Sazio Scholarship Fund | 107,666 | Dr. Bob Kemp Hospice Endowment Fund | 109,909 |
| Hamilton Naturalists’ Club: | | Rotary Club of Hamilton – Rotary Forever Fund | 81,195 |
| Habitat Preservation Endowment Fund | 156,545 | Scouts Canada, Hamilton Wentworth Endowment Fund | 164,070 |
| Conservation & Education Endowment Fund | 42,706 | United Way Tomorrow and Forever Fund | 1,423,951 |
| Ecological Research Endowment Fund | 26,107 | YWCA Hamilton Endowment Fund | 752,296 |

Administration funds

These funds have been established to support the administration of the Foundation’s community leadership, development, grantmaking and communication programs.

| | | | |
|-------------------------------|--------|-----------------------------|---------|
| Cameron K. MacGillivray Fund | 21,140 | Marjorie & Bill Nelson Fund | 100,000 |
| Ross & McBride, LLP Fund | 24,609 | Thérèse & Kent Newcomb Fund | 10,000 |
| Judith McCulloch Tribute Fund | 11,041 | Brenda & Terry Yates Fund | 107,090 |
| Judith & Peter McCulloch Fund | 42,538 | Other gifts combined | 12,654 |

Funds held on behalf of others

These funds have been placed with the Foundation for long-term investment by other charitable organizations.

| | | | |
|---|-----------|--------------------------------|---------|
| Burlington Community Foundation Fund | 5,374,400 | Hamilton Public Library Funds: | |
| Children’s International Learning Centre Fund | 1,544 | Capital Endowment Fund | 238,635 |
| | | Ketha McLaren Fund | 14,880 |
| | | Special Gifts Fund | 465,128 |

Funds in progress

Donors interested in working with HCF may choose to build their funds gradually.

| | | |
|--|---|---|
| Bay Area Science & Engineering Fair Fund | CPRS Hamilton Legacy Fund | Hundred Waters Foundation Fund* |
| Robert P. Beres Fund | Jeffrey Croonen Foundation Fund* | Porto Family Fund |
| Board Leadership Fund | David Davis Memorial Fund | Mark Preece Family House Endowment Fund |
| Bruce Trail Conservancy Endowment Fund | Jeff Dickins Memorial Fund | Revolution Hope: Claire Lewis Foundation Fund |
| Marjorie Dell Clark Fund | Dream Weaver Fund | |
| Conducive Fund | Shirley M. Elford Artist’s Fund | |
| Amanda Marie Cowan Memorial Scholarship Fund | Bruce Hamilton Family Fund* | |

Flowthrough funds

The capital and income from these funds is distributed over time.

| | | |
|--|-------------------------------------|---|
| Ambery Fund | Farah Charitable Fund | Pioneer Energy Foundation |
| Bay Area Arts & Heritage Fund | Ron & Gina Fraser Fund | Protecting Our Environment Together (POET) Fund |
| Bruce Trail Expedition for Kids Fund | Hamilton Prosperity Fund | School Nourishment Fund |
| Children’s International Learning Centre Growth Fund | Hamilton Spectator Summer Camp Fund | Social Enterprise Fund |
| Marlies & Alan Clark Fund | The Hogarth Family Foundation Fund | True Sport Fund |
| Ellen Creaghan Fund | Payne Fund | Young Response Fund |
| | | Anonymous funds* |

Life insurance policies

The Foundation owns and is beneficiary of life insurance policies donated by Sheila Davies, Margaret E. Gage, Diana Hogarth, Helen F. Lofthouse, Judith McCulloch, Barbara Bethune Souter, Joan VanDuzer, Ronald J. Zabrok and two anonymous donors.

Total face value: \$5,058,130

Estates and funds under trustee administration

At the time of publication, the Foundation had been notified of a charitable gift (subject in some cases to the life tenancies of others) in the following estates or trusts: Alice J. Ainsworth, Mary Blanche Brooks, James Walker Culhane, Isabel Dougher, Clara Isobel Elman, Barbara Luella Farnan, Victor Roy Farr, Edna Fern Flewelling, John Herbert Frid, Dr. C. Robert & Mildred Kemp, Mary Joan Bonner Renison, Joan Kathryn Robertshaw, George Kookson Seliga, Vincent Michael Wajar.

Contributors

Hamilton Community Foundation sincerely thanks the following contributors for their gifts this year:

| | | | | | |
|---|---|--|--|---|-------------------------------|
| AbleLiving Services Inc. | Bob & Maggie Carr | Shirley M. de Leeuw | Grant Thornton LLP | Dr. Jack & Ann Laidlaw | Alan Moffett |
| Ike Ahmed | Catholic Children’s Aid Society of Hamilton | Tom & Laurie Deans | Mary Guise | Madeleine P. Laing | Lauren More |
| Alzheimer Society of Niagara Region | Chafrid Holdings Ltd. | Marnie Souter Denton | Dr. John & Gillian Gunstensen | Kathryn Lakin | Alex & Heather Moroz |
| Lise Andreana | Fred & Sharon Charters | Belma Diamante | Ken Hall | Paul & Pam Lakin | Dr. Henry & Betty Muggah |
| Maria Antonakos | Harold & Joanne Cheatley | Terry & Grace Diffey | Brian & Morag Halsey | Lorraine Langham | Robert Munroe & Sheila Sammon |
| Caroline Archer | Jennifer Chivers | The Synod of the Diocese of Niagara | Hamilton Law Association | Tim & Dale Langs | Sarah M. Murphy |
| Dr. Jane Aronson | David & Anne Church | Kevin & Karen Dore | Bruce & June Hamilton | Colin G. & Barbara Lazier | George Nakamura |
| The Honourable Mr. Justice Harrison Arrell & Diane Arrell | Benjamin J. Ciprietti | Sandra L. Edrupt | Annette Hamm | The Honourable Mr. Justice Colin S. Lazier & Jocelyn Lazier | Daniel & Joan Nathanson |
| Affiliated Services for Children & Youth (ASCY) | City of Hamilton | Ann Elford & family | Paul & Helen Hanover | Paul Lee-Chin | Joyce Neal |
| Heidi Balsillie | Alan & Marlies Clark | Arlene Elford | Joseph & Joan Harbell | Dr. Arthur L. Lesser | Dermot P. Nolan |
| JoAnne Barresi | Bryan & Donna Clarke | William Ernst | Charles & Judy Hare | Angel Li | Denise O’Connor |
| Philippe & Mary Barrette | Stephen Clemens & Jill Anderson | Marion Fair | Nancy Harkness | Ruth Liebersbach | Erin O’Neil |
| Bay Area Science & Engineering Fair | Philip F. Connell | FEI Canada, South Golden Horseshoe Chapter | The Honourable Mr. Justice C. Raymond Harris & Beth Harris | Edward Liptay | Larry & Marnie Paikin |
| Duncan G. Bell | James Conner | Don Fell | Bob & Barbara Harwood | Faye Little | Peter & Rose Marie Palmer |
| Bethesda United Church | Connor, Clark & Lunn Private Capital | FELLFAB Limited | John & Leone Harwood | Lodge of the Ancient Landmarks | Gina Panavas |
| Bike for Mike supporters | Frank A. Cooke Sr. | Fengate Capital Management Ltd. | Dr. Joan B. Heels | Helen Lofthouse | James Pearson |
| John & Sandra Black | Terry Cooke & Maureen Wilson | Deirdre Finlay | Rob & Tami Henderson | Losani Family Foundation Fund supporters | Al & Lorraine Peckham |
| Fay Booker | William Cooke | Margaret Fischbuch | Neil Hendry & The Honourable Madam Justice Jane A. Milanetti | Bill & Anne Lupkoski | Christy Pettit |
| Wendy Brawn | Dr. Justin & Jessie Cooper | Frank & Lydia Fitz | Susan Hertell | Peter & Barb MacMillan | M. Geraldine Phenix |
| Bill & Marnie Brehm | Tom Cooper | Dr. Shawn Forbes | Murray & Diana Hogarth | Barbara Mahaffy | Shirley Picken |
| Hazel M. Broker | Chantal Copithorn | Brent & Sally Foreman | Charlie Hogg & Heather Gilmour | David Malcolm & Annette Aquin | Pioneer Energy LP |
| Bruce Trail Expedition for Kids supporters | Sondra Cornett | Bob & Margaret Freeborn | Dr. Sargent & Ruth Horwood | Glenn A. Mallory | Paul & Eunice Porritt |
| Ernest & Ruth Brunton | Anita Counter-Woolfenden | Jeremy Freiburger | Wendy J. Hough | Tom & Shahron Marlor | Lydia Potocnik |
| Mary Buzzell | Pam Cowan | Patricia Fulton | Irene Hubar | Virginia Mattuzzi | PricewaterhouseCoopers LLP |
| Robert Byrne | R. Ian Cowan | Thomas & Joan Gallagher | Luisa Hubner | Joan McAuley | Steve & Mary Prime |
| Don & Helen Callaway | Charles Criminisi | Paul Gibel | Michael & Linda Hughes | Mary McCallum | Probus Club of Hamilton |
| Canadian Association of Gift Planners | Donna Cripps | Grant & Sandy Gillies | Human Resources & Social Development Canada-NFP | Sheila M. McDougall | Judith Pyke |
| Alice A. Cannon | Robert D. Crockford | Mary S. Gilmour | Bruce & Linda Hutchinson | Norman & Marion McGugan | Diane Rawsthorn |
| Janet E. A. Cannon | Leslie Cross | Nancy Giovinazzo | Paul R. C. Jaggard | Dr. Don & Kathryne McLean | Beatrice W. Riddell |
| Paul & Sara Cannon | Margaret Cunningham | Rick & Justine Giuliani | Cynthia Janzen | McMaster University | Marie L. Robbins |
| Jane Capell | Warren & Jean Currie | Robert C. & L. Ann Glass | Dean Jefferies | Janet McNaught | Donna Robertson |
| Richard & Carole Capling | Andrew Cushnie | Sarah Glen | Tom & Cheryl Jensen | Rev. Alan & Maureen McPherson | Paul Robinson |
| David Capson | Lisa Dalia | Jay Goldstein | Shirley A. Johnson | Archie J. McQueen | Rotary Club of Hamilton |
| James & Helen Cardwell | Dark Shadows Festival | Matt & Sarah Goodman | Ginny Jones | Ruth McQueen | Sunshine Fund |
| | Adrienne Davidson | Susan Goodman | Kathryn Jones | Grahame & Sheree Meredith | John & Dr. Leila W. M. Ryan |
| | Bob & Renate Davidson | W. Ian Gordon, QC | Anju Joshi | Frank C. Miller | Robert & Peggy Savage |
| | Dr. Meghan Davis | | Sylvia Kajiura | Paul & Carolyn Milne | James A. Scarfone |
| | | | Hilary Kaler | Ruth Milne | Michael Schwenger |
| | | | John Keeler & Nancy Rundle | Bill & Jane Milne | Sandy J. Schwenger |
| | | | Helen Kirkpatrick | James Milner | Tina S. Seale |
| | | | | Evelyn Mitchell | Liza Sheard |
| | | | | | Donna Sheldrake |
| | | | | | John Simpson |

John & Darlaine Skirving
J. Neil Smith
Teresa Smith
Society of Arts & Science Students
Marnie Spears
Frederick J. & Ruth G. Spencer
Robert & Miriam Stanbury
Jo-Anne Stephens
Sandra Stephenson
Marta Stiteler
Glen & Debra Swire
Dr. Lewis Tauber & Lori Dessau Tauber
Rose Taylor-Weale
Anne Tennier
Joshua E. & Amy Thorne
Patricia Timson

Ruth Todd
Dr. Ninh Tran
Vincenza Travale
Margaret Trupish
Margarita Tsangarakis
Peter & Karen Turkstra
Kenneth J. Tyler
U.S. Steel Canada Inc.
United Way of Burlington & Greater Hamilton
Joan Van Damme
Joyce Vanderpost
Joan VanDuzer
Tracy Varcoe
Julie Vohra
Alan & Janet Walker
Sammara J. Wallace

Janet Walsh
Norma M. Walsh
Patricia A. Walsh
Ed & Carole Walzak
David & Nancy Wands
Dr. Gary & Joy Warner
Beth Webel
Gwyn & Gail Williams
Bill & Marilyn Wilson
The Winnipeg Foundation
Terry & Brenda Yates
Marita Zaffiro
Nicholas J. Zaffiro, QC
Christel Zeyl
Zonta Club of Hamilton I
Zonta Club of Hamilton II

Kumie Pather
Jenny Pearce
Michael Pollard
Dr. Norman Price
Harry Quaglia
Dave Rayment
Suzanne Reynolds

Poyntz & Annetta Ricketts
Edward Rizzo
Joan Robertshaw
Josephine Sardo
Philip & Rose Sawka
Edna Schleihauf
Sherry Sleightholm

Jane M. Smith
Betty Soden
George Truman
Neil Vanderwal
Elizabeth Ward
Arthur Weisz

Tribute gifts received in honour of

Paul Berton
Molly Beube
Elaine Burgess
Janet Cannon
Mark Chamberlain
Charles Criminisi & Joanne Cupido

Lori Dessau Tauber
Glenn Gibson
Michael Lynes & Cathy Simon
Douglas Marrs
Ginny Mattuzzi
Sheree Meredith

Al & Donna Parker
Marc Pommainville & Stacy Allerton
Mr. & Mrs. Ken Robins
Ron & Eleanor Steepe
Joshua Thorne
Joshua & Amy Thorne
Marita Zaffiro

Hamilton Spectator Summer Camp Fund

Hamilton Community Foundation thanks all donors who contribute to sending children to camp. Gifts of \$500 and over are listed below:

Beverly Armstrong
Burlington Concert Band & Pops Orchestra
CIBC World Markets Children’s Foundation

Elizabeth Eldridge
Fabris Inc.
Hamilton Philharmonic Youth Orchestra
Imperial Vending Services Inc.

Real McCoys
Rotary Club of Ancaster AM
Rotary Club of Hamilton AM
Elizabeth Whetham
Eric & Marnie Willis

Holiday gifts received in honour of

Irene Booker
Spencer Garel
Connor, Trevor & Samantha Goodes

Ryan & Isabella Hood
Bill & Lois Reynolds
Jex, Josh & Paige Tew
Patricia Timson

Karen Turner
Heidi Van Damme
Westmount Secondary School teachers

Memorial gifts received in honour of

Anne Aquin
William Balfour
Joyce Barrett
John Bell
Marie Boyle
Don Brown
Linda Brown
Marion Campbell
Joseph & Mildred Cardwell
Michael Chamberlain
Marjorie Dell Clark
Wayne Cochrane
Joyce Cooke

Amanda Marie Cowan
Annie Mae Cowman
Peter Creer
Edna Cutler
Réal Dubé
Greg Elford
Justice Eugene Fedak
Thelma Gibb
Tara Lynn Giuliani
Beverly Guy
Bob Harwood
Hilda Henderson
Roy Howard

Dan Jodouin
Philippe Labrosse
Isobel Laidlaw
Clare & Sarah Lakin
Valerie Lennard
Norman Levitt
Rudy & Margaret Lupkoski
Lawrence Mills
Bernie Morelli
Bill Muir
Betty Newlands
Bill Newman
John O’Connor

Gifts in kind

Art Gallery of Hamilton
Boys and Girls Club of Hamilton
Christ’s Church Cathedral
Connor, Clark & Lunn Private Capital
Core Collaborative Learning
Dr. Tom Deans
Elation Design Studio
Evans Sweeny Bordin LLP
Freeway Café
Hamilton Best Start Network
Hamilton Centre for Civic Inclusion
Hamilton Community Legal Clinic

Hamilton Public Library
The Hamilton Spectator
Hamilton-Wentworth District School Board
Immigrant Women’s Centre
ImpactLink Capital
Jarislowsky Fraser Limited
Vijay Jos
KITESTRING
KPMG
Loyola House
Mohawk College
New Motto
Perkins Centre

Pier 8 Group
Riverdale Community Centre
Rodgers Investment Consulting
Katherine Roy
St. Giles Church
St. Helen’s Catholic School
St. Peter’s Church
Margaret Secord
Dr. Kristina Trim
Jodi Vanderheyden
Volunteer Hamilton
Dr. Doug Willms
Yale Properties

The Hamilton Spectator Summer Camp Fund

1984 to 1993 One of the city's best-known charitable endeavours, The Hamilton Spectator Summer Camp Fund, came under the auspices of the Foundation in 1984.

While the camp fund dates back to 1898, "The Spec" joined forces with the Foundation in the 1980s to do what each could do best: the Foundation to use its financial and granting expertise to administer the fund; the newspaper to use its community reach to raise awareness and educate citizens about the benefits of camp.

Since that time, thousands of Hamilton children have had the opportunity to experience the joy of summer camp thanks to this fund, and thousands of Hamiltonians have experienced the pleasure of knowing their contribution makes it possible.

The Spectator Summer Camp Fund, established so many years ago, has had and continues to have a huge influence on child development in this community.

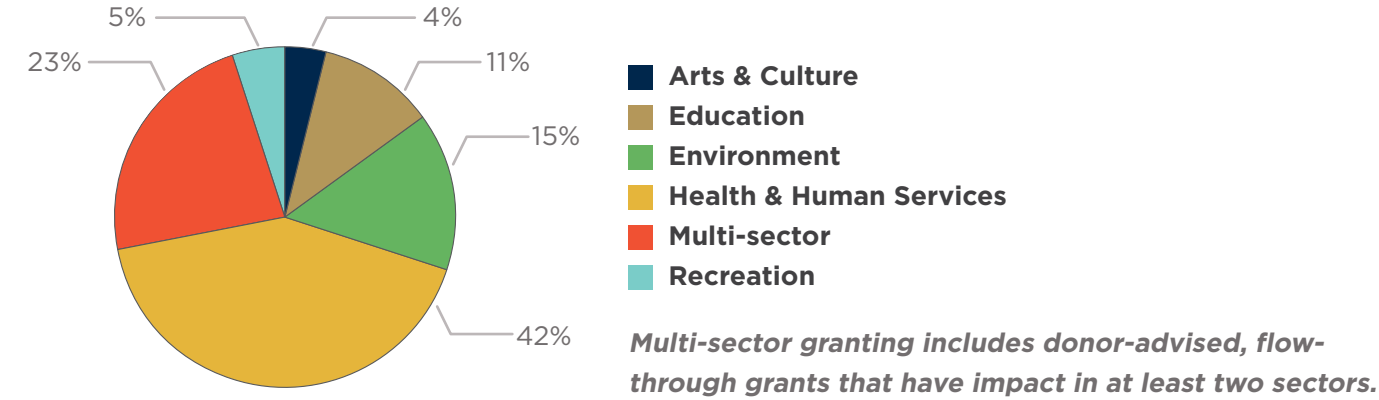
60
years



Original photo courtesy
of The Hamilton Spectator

Grants made in 2013-2014

Hamilton Community Foundation offers donors powerful opportunities to make a difference. We are unique in that we enable donors to grant to the widest possible range of charitable organizations and initiatives: arts and culture, health and human services, environment, recreation and education. Through prudent investment and sound financial practices, we ensure that donors' wishes are respected forever. Details about our grants and projects can be found at www.hamiltoncommunityfoundation.ca



Grants from Community Fund

Unrestricted Funds

| | | | |
|--|--------|--|---------|
| City Kidz Ministry | 1,000 | Hamilton-Wentworth District School Board | 2,000 |
| Community Foundations of Canada | 26,773 | HCF: Hamilton Roundtable for Poverty Reduction | 50,000 |
| Compass Point Bible Church | 5,000 | HCF: Youth Advisory Council | 15,000 |
| Conserver Society of Hamilton & District, Inc.†/Green Venture | 19,880 | HCF: Youth-led Community Action Projects | 12,000 |
| Dr. Bob Kemp Hospice Endowment Fund | 5,000 | McMaster University | 29,152 |
| Elizabeth Fry Society | 16,000 | Mission Services of Hamilton | 2,204 |
| First Hamilton Christian Reformed Church (New Hope Church) | 20,000 | North End Neighbours | 1,601 |
| Hamilton Association for Residential & Recreational Redevelopment Programs | 332 | North Hamilton Community Health Centre | 5,416 |
| Hamilton East Kiwanis Boys' and Girls' Club | 5,660 | Robert Land Community Association | 6,800 |
| Hamilton-Wentworth Catholic Child Care Centres Inc. | 36,000 | Shalem Mental Health Network | 13,928 |
| | | Social Planning & Research Council of Hamilton | 293,695 |

| | |
|--|----------------|
| Social Planning & Research Council of Hamilton†/Campaign for Adequate Welfare and Disability Social Action | 4,560 |
| The Hamilton Dream Centre | 3,000 |
| The John Howard Society | 15,673 |
| Welcome Inn Community Centre of Hamilton | 5,953 |
| Welcome Inn Community Centre of Hamilton†/Jamesville Hub | 2,000 |
| YMCA Hamilton†/Open Streets Hamilton | 5,000 |
| TOTAL | 603,627 |

Immediate Response Fund

| | |
|---|---------------|
| Community Child Abuse Council of Canada | 10,000 |
| Elizabeth Fry Society | 5,000 |
| St. Joseph Immigrant Women's Centre | 974 |
| Wesley Urban Ministries | 1,000 |
| TOTAL | 16,974 |

In addition to these grants from the Community Fund, \$70,000 was paid this year for grants approved in prior years.

Grants from field-of-interest funds

Ike & Shahnaz Ahmed Foundation Fund

| | |
|----------------------|--------------|
| Brock University | 1,453 |
| Mohawk College | 1,400 |
| University of Ottawa | 3,500 |
| Trent University | 1,283 |
| TOTAL | 7,636 |

The Alice Jean Ainsworth Memorial Fund

| | |
|---|---------------|
| Centre 3 for Print and Media Arts | 15,000 |
| Hamilton East Kiwanis Boys' and Girls' Club | 17,751 |
| Hamilton Public Library | 15,231 |
| HCF: Hamilton Spectator Summer Camp Fund | 7,398 |
| North Hamilton Community Health Centre | 4,860 |
| TOTAL | 60,240 |

Nelson Allan Fund

| | |
|---------------------------------|-------|
| Burlington Community Foundation | 5,109 |
|---------------------------------|-------|

The Angel Fund*

| | |
|--|--------------|
| Hamilton Community Foundation | 204 |
| North Hamilton Community Health Centre | 3,884 |
| TOTAL | 4,088 |

Mary Lauder Cassidy Fund

| | |
|--|--------------|
| Neighbour to Neighbour Centre (Hamilton) | 3,975 |
| St. Matthew's House | 5,000 |
| TOTAL | 8,975 |

Giovanni & Grazia Criminisi Literacy Fund*

| | |
|--------------------------------|-----|
| Elliott Heights Baptist Church | 883 |
|--------------------------------|-----|

** These funds contribute to the Community Fund/Unrestricted funds
† Denotes lead partners for this grant*

| | |
|-------------------------------|------------|
| Hamilton Community Foundation | 94 |
| TOTAL | 977 |

Delaware Fund

| | |
|---|---------------|
| Hamilton East Kiwanis Boys' and Girls' Club | 6,654 |
| Mission Services of Hamilton | 6,400 |
| TOTAL | 13,054 |

Dougher Community Fund

| | |
|---|----------------|
| Canadian National Institute for the Blind | 4,000 |
| City Housing Hamilton | 7,200 |
| Conserver Society of Hamilton & District, Inc.†/Urquhart Butterfly Garden | 5,600 |
| Dundas Central Public School Home & School Association | 10,000 |
| Dundas Historical Society Museum | 5,000 |
| Dundas Valley Orchestra | 4,000 |
| Dundas Valley School of Art | 10,000 |
| Dundas Youth Chaplaincy | 17,294 |
| Hamilton Conservation Foundation | 15,000 |
| Hamilton Council on Aging | 9,000 |
| Montessori Adolescent School of Hamilton | 5,000 |
| Ontario March of Dimes | 5,000 |
| St. Joseph's Villa Foundation | 5,772 |
| TOTAL | 102,866 |

Shirley M. Elford Gift of Today Fund

| | |
|--------------------------------------|-------|
| Wellwood Resource Centre of Hamilton | 4,680 |
|--------------------------------------|-------|

Russell I. Elman Fund

| | |
|----------------|-----|
| Collège Boréal | 250 |
|----------------|-----|

| | |
|---|---------------|
| McMaster University | 5,000 |
| Neighbour to Neighbour Centre (Hamilton) | 3,377 |
| TOTAL | 8,627 |
| First Place, Hamilton Tomorrow Fund | |
| St. Joseph's Home Care | 8,595 |
| Foxcroft Family Youth Fund | |
| Fit Active Beautiful (FAB) Foundation | 981 |
| Betty & Jack George Family Fund | |
| Living Rock Ministries | 667 |
| Gibson Trust/Town of Flamborough | |
| Hamilton Niagara Haldimand Brant Community Care Access Centre | 1,205 |
| Edward & Gladys Halloran Memorial Fund | |
| Robert Land Community Association | 13,200 |
| Social Planning & Research Council of Hamilton | 15,221 |
| TOTAL | 28,421 |
| Hambro Fund | |
| Hamilton Public Library | 1,559 |
| Barbara & Bob Harwood Fund | |
| Conserver Society of Hamilton & District, Inc.+/Green Venture | 1,902 |
| Florence E.S. Hutton Fund | |
| HCF: Hamilton Spectator Summer Camp Fund | 12,586 |
| Arthur & Helena Lemon Fund | |
| Catholic Family Services of Hamilton | 3,571 |
| Jane C. LeWarne Fund | |
| Mission Services of Hamilton | 608 |
| Antonina Lombardo Fund | |
| Alzheimer Society of Hamilton and Halton | 4,400 |
| Ray Lowes Environmental Fund | |
| Hamilton Conservation Foundation | 7,508 |
| Hamilton Naturalists' Club | 7,508 |
| TOTAL | 15,016 |
| Marchese Health Care 50th Anniversary Legacy Fund | |
| Threshold School of Building | 2,700 |
| George & Shirley McBride Foundation Fund | |
| Burlington Community Foundation | 8,367 |
| Habitat for Humanity Hamilton | 10,000 |

| | |
|--|---------------|
| Hamilton Association for Residential & Recreational Redevelopment Programs | 19,668 |
| TOTAL | 38,035 |
| Note-Able Music Fund | |
| Hamilton East Kiwanis Boys' and Girls' Club | 1,095 |
| Pioneer Energy Fund* | |
| Affiliated Services for Children & Youth (ASCY) | 20,000 |
| Children's Aid Society of Hamilton | 5,000 |
| Elliott Heights Baptist Church | 15,333 |
| TOTAL | 40,333 |
| Royal Canadian Humane Association Fund | |
| Royal Canadian Humane Association | 2,550 |
| School Nourishment Fund | |
| Social Planning & Research Council of Hamilton+/Tastebuds (formerly Partners in Nutrition) | 80,000 |
| School Sisters of Notre Dame Legacy Fund | |
| Good Shepherd Centres Hamilton+/Healthy Birth Weights Coalition | 7,238 |
| Bill & Tina Seale Fund | |
| Living Rock Ministries | 2,700 |
| Rotary Club of Hamilton Sunshine Fund+/Wever Community Development Committee | 2,700 |
| TOTAL | 5,400 |
| The Glenn & Sidney Sellick Fund | |
| Social Planning & Research Council of Hamilton | 354 |
| Lillian M. Shaw Fund | |
| Community Child Abuse Council of Canada | 10,073 |
| W. Robert & Marion S. Shivas Conservation Trust Fund | |
| Halton Region Conservation Foundation | 2,750 |
| Hamilton Conservation Foundation | 2,750 |
| Hamilton Naturalists' Club | 2,750 |
| Royal Botanical Gardens | 2,750 |
| TOTAL | 11,000 |
| Charles & Ret Swire Fund | |
| HCF: Hamilton Spectator Summer Camp Fund | 5,355 |
| True Sport Fund | |
| Fit Active Beautiful (FAB) Foundation | 1,507 |

| | |
|---|---------------|
| Fund for Underprivileged Children | |
| Community Foundation Grey Bruce | 8,360 |
| Hamilton East Kiwanis Boys' and Girls' Club | 1,840 |
| HCF: Hamilton Spectator Summer Camp Fund | 9,463 |
| Mission Services of Hamilton | 6,400 |
| TOTAL | 26,063 |
| The Van Dusen Fund* | |
| Burlington Community Foundation | 2,182 |
| Hamilton Community Foundation | 779 |
| Shalem Mental Health Network | 12,472 |
| TOTAL | 15,433 |

| | |
|--|---------------|
| Joan C. Watt Memorial Fund | |
| McMaster University | 600 |
| Threshold School of Building | 1,261 |
| TOTAL | 1,861 |
| Women 4 Change Fund | |
| Hamilton-Wentworth District School Board | 10,000 |
| Kenneth Boothe Young & Marie Catherine Young Fund | |
| Centenary United Church | 5,379 |
| Hamilton's Centre for Civic Inclusion | 15,000 |
| McMaster University | 17,593 |
| Welcome Inn Community Centre of Hamilton | 3,030 |
| TOTAL | 41,002 |

Grants from donor-advised funds

| | |
|---|----------------|
| Ambery Fund | 86,000 |
| Hugh C. Arrell Memorial Fund | 300 |
| Ella Baird & Grace Baird McQueen Memorial Fund/A.J. McQueen | 1,200 |
| Board Leadership Fund | 2,883 |
| Bruce Trail Expedition for Kids Fund | 26,500 |
| W.L. Carpenter Memorial Fund* | 121,668 |
| Michael Chamberlain Fund | 40,904 |
| Clark Family Foundation Fund | 44,000 |
| Marlies & Alan Clark Fund | 59,000 |
| Ellen Creaghan Fund | 20,000 |
| Farah Charitable Fund | 4,000 |
| Elham & Joseph Farah Family Foundation Fund* | 123 |
| Fengate Community Foundation Fund* | 31,285 |
| The Gilmour Fund | 15,000 |
| Tara Lynn Giuliani Foundation Fund | 7,308 |
| Lillian & Marvin Goldblatt Family Fund | 7,000 |
| Hamilton Spectator Summer Camp Fund | 60,975 |
| <i>Grants to 21 organizations supporting 692 children to attend one week of camp.</i> | |
| Heather & Ross Hamlin Fund* | 622,000 |
| Heels Family Vocal Award Fund* | 2,226 |
| Mildred Dixon Holmes – Youth Orchestra Fund | 9,271 |

| | |
|---|----------------|
| The Hogarth Family Foundation Fund | 60,000 |
| Hutton Family Fund* | 3,452 |
| Kirkpatrick Fund | 1,800 |
| Lawyers' Legacy for Children | 1,000 |
| Losani Family Foundation Fund | 110,775 |
| John & Esther Marshall Memorial Fund | 8,190 |
| The Martin Foundation Fund | |
| Art Gallery of Hamilton | 2,000 |
| Bach Elgar Choir | 2,000 |
| Chamber Music Hamilton | 2,000 |
| Christ's Church Cathedral | 2,000 |
| CNIB Ontario | 2,000 |
| Dundas Valley School of Art | 2,586 |
| Elizabeth Fry Society | 5,000 |
| Good Shepherd Centres Hamilton | 4,000 |
| Hamilton Conservation Foundation | 6,000 |
| Hamilton Council on Aging | 2,645 |
| Hamilton East Kiwanis Boys' and Girls' Club | 2,000 |
| Hamilton Music Collective | 2,000 |
| Hamilton-Wentworth District School Board | 1,269 |
| HCF: Hamilton Spectator Summer Camp Fund | 2,000 |

| | |
|---|----------------|
| Interval House of Hamilton | 2,000 |
| March of Dimes Canada | |
| Non-Profit Housing Corporation | 2,000 |
| St. Matthew's House | 2,000 |
| The John Laing Singers | 2,000 |
| TOTAL | 45,500 |
| Mayberry Family Fund | 6,976 |
| McCallum, McBride Fund | |
| Ancaster Community Services & Information | 500 |
| Canadian Mental Health Association | 500 |
| Eagles Nest Association of Waterdown | 250 |
| Elizabeth Fry Society | 1,000 |
| Hamilton & District Extend-a-Family | 500 |
| Hamilton Naturalists' Club | 5,000 |
| Hamilton-Wentworth District School Board [†] /Mountain Secondary School | 1,000 |
| Living Rock Ministries | 1,250 |
| Mission Services of Hamilton | 1,500 |
| Native Women's Centre | 1,000 |
| Neighbour to Neighbour Centre (Hamilton) | 3,000 |
| Niwasa Head Start Preschool | 1,000 |
| Rotary Club of Hamilton Sunshine Fund [†] /Wever Community Development Committee | 2,000 |
| St. Matthew's House | 1,500 |
| The Hamilton Dream Centre | 1,500 |
| Urban Native Homes | 1,000 |
| Welcome Inn Community Centre of Hamilton | 1,000 |
| Wesley Urban Ministries | 2,000 |
| TOTAL | 25,500 |
| Carolyn & Paul Milne Fund | 1,500 |
| Mark & Barbara Nimigan Fund | 3,250 |
| Payne Fund | 15,000 |
| Pioneer Energy Foundation | 358,500 |
| Ed Smee Conserver Society Environmental Fund | 4,000 |
| Glen & Debra Swire Fund | 1,508 |
| Thorne Family Fund | 2,000 |
| Tran Family Fund* | 90 |
| Karen & Peter Turkstra Family Foundation Fund | 35,000 |

| | | |
|---|--------|--|
| Edith H. Turner Foundation Fund | | |
| Conserver Society of Hamilton & District, Inc. [†] /Green Venture | 5,000 | |
| Conserver Society of Hamilton & District, Inc. [†] /Hamilton Conservation Foundation | 5,000 | |
| Culture for Kids in the Arts | 15,000 | |
| Dundas Valley School of Art | 5,000 | |
| Elliott Heights Baptist Church | 4,667 | |
| Fit Active Beautiful (FAB) Foundation | 7,353 | |
| Flamborough Information & Community Services | 5,500 | |
| Good Shepherd Centres Hamilton [†] /Healthy Birth Weights Coalition | 2,762 | |
| Good Shepherd Centres Hamilton [†] /Liberty for Youth | 5,000 | |
| Hamilton Naturalists' Club | 9,400 | |
| Hamilton Philharmonic Orchestra (2000) Inc. | 5,000 | |
| Hamilton-Wentworth District School Board [†] /Cardinal Heights | 2,000 | |
| Hamilton-Wentworth District School Board [†] /Catholic Family Services of Hamilton | 6,429 | |
| Hamilton-Wentworth District School Board [†] /Mountain Secondary School | 6,000 | |
| Hamilton-Wentworth District School Board [†] /Neighbour to Neighbour Centre (Hamilton) | 6,623 | |
| Living Rock Ministries | 29,333 | |
| Lynwood Hall Child and Family Centre | 5,000 | |
| Mission Services of Hamilton | 6,500 | |
| Native Women's Centre | 20,000 | |
| Neighbour to Neighbour Centre (Hamilton) | 1,025 | |
| North Hamilton Community Health Centre | 6,000 | |
| Rotary Club of Hamilton Sunshine Fund [†] /Wever Community Development Committee | 5,000 | |
| Rotary Club of Hamilton Sunshine Fund [†] /YMCA of Hamilton/Burlington/Brantford | 20,000 | |
| Royal Conservatory of Music | 15,000 | |
| Social Planning & Research Council of Hamilton [†] /Art Forms | 10,000 | |
| Social Planning & Research Council of Hamilton [†] /Breakfast Club of Canada | 10,000 | |
| St. Joseph Immigrant Women's Centre | 15,000 | |
| Start2Finish | 5,000 | |

| | |
|--|--------|
| Student Open Circles | 10,000 |
| The Easter Seals Ontario | 5,000 |
| The John Howard Society | 9,855 |
| Threshold School of Building | 31,039 |
| Welcome Inn Community Centre of Hamilton | 15,000 |
| Wellwood Resource Centre of Hamilton | 5,000 |

| | |
|--|------------------|
| Wesley Urban Ministries | 11,434 |
| YWCA Hamilton | 10,000 |
| TOTAL | 335,920 |
| Williams Family Fund* | 2,250 |
| The Young Fund* | 1,272,919 |
| <i>In addition to these grants, \$100,000 was paid this year for grants approved in prior years.</i> | |
| Anonymous | 139,741 |

Grants from scholarship and bursary funds

| | | | |
|---|--------|--|--------|
| General Bursary Fund/Genevieve A. Chaney & Cordelia C. Ensign | 19,000 | Russell & Elizabeth Lindley Fund | 5,370 |
| CPRS Hamilton Legacy Fund | 1,000 | Music Bursary Fund | 2,350 |
| James Darby Bursary Fund | 3,200 | Rundle Foreign Study Bursary | 2,500 |
| Jeff Dickins Memorial Fund | 1,000 | United Nations Association, Hamilton & District Bursary Fund | 12,677 |
| Eugene B. Eastburn Fellowship Fund | 80,000 | John E. VanDuzer Scholarship Fund | 2,000 |
| Geritol Follies Bursary Fund | 3,000 | Albert & Betty Walters Fund | 1,900 |
| Christina Hamilton Scholarship Fund | 932 | Jervis B. Webb Company of Canada Scholarship Fund | 6,000 |
| William Allison Haynes Fund | 742 | Ross F. Webb Bursary Fund | 2,258 |
| Lee Hepner Award Fund | 1,500 | | |
| Mildred Dixon Holmes – Artist of the Year Fund | 2,000 | | |

Grants from designated funds

| | | | |
|--|------------------|--|----------------|
| Douglas J. Clark Fund* | 4,107 | Samaritans' Tithe Fund | 8,632 |
| Walter & Mildred Danby Fund* | 15,595 | Stoney Creek Health Fund/Dr. Bob & Mildred Kemp | 27,109 |
| Frank Charles Miller Fund* | 1,138,220 | United Way Fund/Kenneth R. Walsh | 7,450 |
| Phenix Fund for Animal Welfare | 3,532 | Anonymous | 153,634 |
| James P. & Mary S. Phin Charitable Fund | 7,134 | | |
| PHOG Endowment Fund | 10,416 | | |

Total grants and community leadership

| | | | |
|---|------------------|---|------------------|
| Total grants approved | 6,336,135 | The Promise Education Strategy Research | 21,164 |
| Adjustment for deferred grants | (219,137) | Youth in Philanthropy Program | 16,794 |
| TOTAL GRANTS PAID | 6,116,998 | Neighbourhood Action Strategy Evaluation (formerly Tackling Poverty Together) | 10,290 |
| Community leadership projects | | Other leadership projects | 15,600 |
| Hamilton Roundtable for Poverty Reduction | 232,630 | Total community leadership projects | 338,957 |
| Neighbourhood Leadership Institute | 42,479 | TOTAL | 6,455,955 |

A Focus on Neighbourhoods

1994 to 2003 For HCF, this was the decade that launched strategic philanthropy, as we moved toward proactive, planned, focused use of our burgeoning resources. The generous Young family gift prompted us to reach out in a broad community consultation and best practices review to determine the most useful way to play the community foundation's unique position.

The findings clearly demonstrated that neighbourhoods were the key to developing Hamilton's strengths and vitality. We launched the Growing Roots...Strengthening Neighbourhoods initiative in 2002 and have proven the power of small grants and leadership development to help the city's most challenged neighbourhoods identify and build on their assets.

Working side-by-side with residents—the people who best know a neighbourhood and its needs—this approach uncovered safer, beautified, welcoming communities and nurtured local leaders.

The lessons we learned in the process informed our direction in the coming decade.

60
years



Original photo courtesy
of The Hamilton Spectator

Financial highlights

The financial results for the year ended March 31, 2014 are outstanding and a wonderful start to Hamilton Community Foundation's 60th Anniversary.

Thanks to the generosity of our donors, we received donations of \$6.6 million and annual granting is the largest in our history. Financial markets provided an annual 17.7% return, with the 10-year return close to 7%. These strong returns have allowed HCF to top up our reserve which enables us to continue to grant and maintain operating capacity when the market is weak. We continue to be pleased with the progress on diversifying our investments through alternative investment strategies, including "impact investment" commitments which align more of our assets with our mission. Following are financial highlights and key historical trends. In keeping with our commitment to financial accountability and transparency, full audited financial statements are available at www.hamiltoncommunityfoundation.ca or by mail. You may also access the HCF T3010 tax return information via www.cra-arc.gc.ca/chrts-gvng/lstngs/menu-eng.html

| (\$000's) | 2014 | 2013 | 2012 |
|---------------------------------------|---------|---------|---------|
| Total assets | 155,844 | 137,014 | 124,964 |
| Investments at market* | 153,366 | 135,935 | 124,074 |
| Investment returns | | | |
| One year | 17.7% | 10.9% | 2.7% |
| Five years | 12.1% | 4.6% | 1.6% |
| Ten years | 6.7% | 6.5% | 4.1% |
| Funds balance | | | |
| Endowed funds | 118,062 | 111,957 | 108,514 |
| Restricted funds | 28,374 | 15,914 | 8,751 |
| Operating funds | 52 | 90 | 149 |
| Total HCF funds balance | 146,489 | 127,961 | 117,414 |
| Funds held on behalf of other parties | 8,315 | 7,392 | 6,676 |
| Donations received | 6,557 | 5,906 | 4,797 |
| Grants and community leadership | 6,456 | 5,155 | 5,393 |
| Operating expenses | 2,149 | 2,037 | 2,088 |
| As a % of average total assets | 1.5% | 1.6% | 1.7% |

*In addition, HCF assets at March 31, 2014 include alternative investments recorded at cost totalling \$1,655,000.

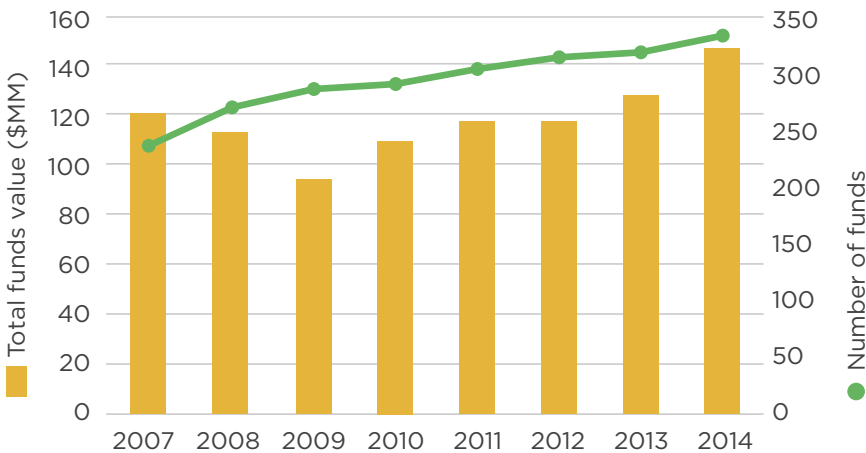
Total Assets

Hamilton Community Foundation's total assets of \$155.8 million at March 31, 2014 include HCF funds balance and funds held on behalf of third parties at \$8.3 million.

HCF Funds Balance

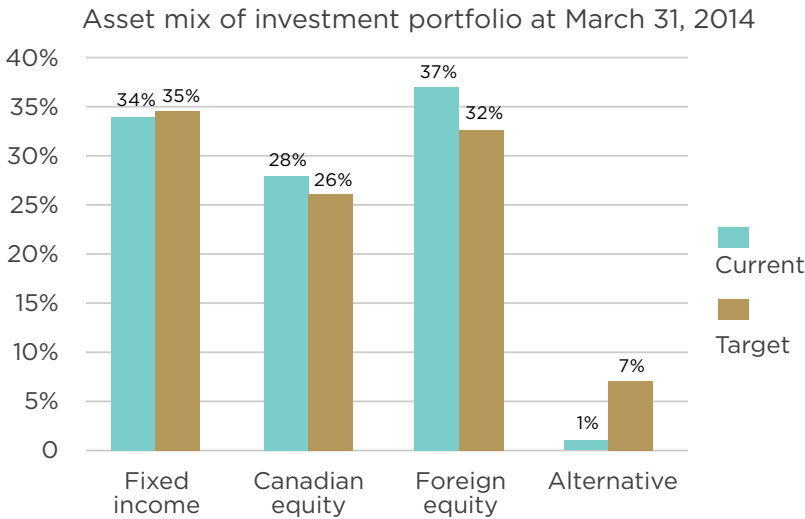
Hamilton Community Foundation's funds balance represents accumulated donations plus the net investment earnings on these donations, less granting and operating costs. Funds include both endowed and flowthrough funds. Endowed funds are held permanently, granting from investment earnings. Flowthrough funds are fully distributed as grants over a pre-determined term.

The funds balance has grown 22% from \$119.7 million in 2007 to \$146.5 million at year ended March 31, 2014. The funds balance eroded in 2008 and 2009 when donations did not offset the impact of worldwide investment market declines. Increased donations and very strong investment returns for 2014 supported an annual 15% funds growth. The number of funds at 333 has increased 42% from 235 in 2007.

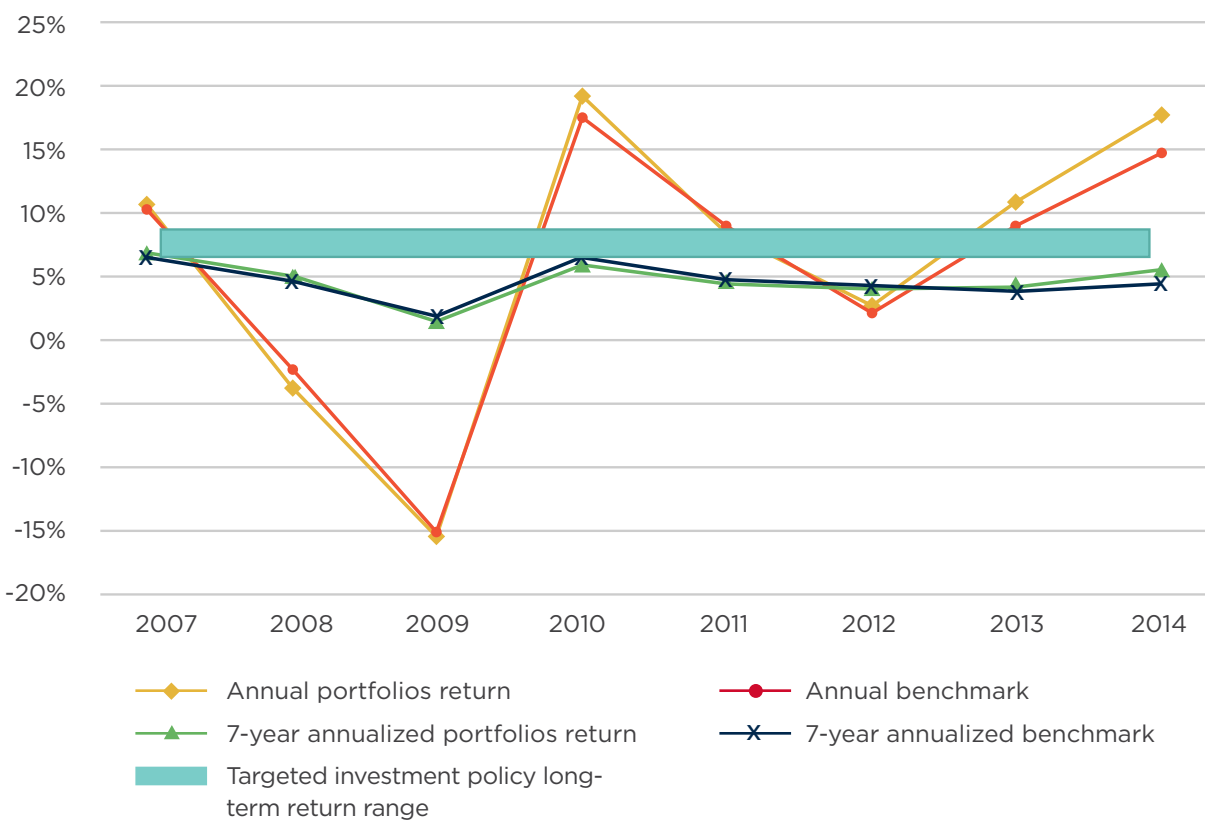


Investments

Investments which are traded in active markets are reported at their fair market value. Investments not actively traded are recorded at their cost less any impairment of their value. In a continuing effort to provide a more diverse and robust portfolio, HCF has committed to investing in alternative asset classes including real estate, private equity and infrastructure. These alternatives are consistent with the Foundation's long-term investment horizon and liquidity requirements. As these investments are not actively traded, they are valued at cost on the financial statements. Portfolios are invested according to investment policy guidelines established by HCF's Board of Directors. HCF's portfolios are managed by three professional investment managers in accordance with the policy and overseen by the Board's Finance and Investment Committee. This committee reviews the investment managers' reports quarterly to assess each manager's performance. In addition, the committee meets with the investment managers semi-annually to complete a formal evaluation. The investment policy sets out a target asset mix as well as a range around these targets. The managers use their discretion to invest the portfolios within this range. The following reflects the current and target asset mix. For the alternative investments, 'target' is the amount committed to this asset class; 'current' is the amount actually invested at year end.



Investment returns



This graph compares:

- HCF's portfolios return for publicly traded securities for each year against the annual investment policy benchmark for that year.
- HCF's seven-year annualized return against the seven-year annualized investment policy benchmark.
- Both of these against the targeted investment policy long-term return range.

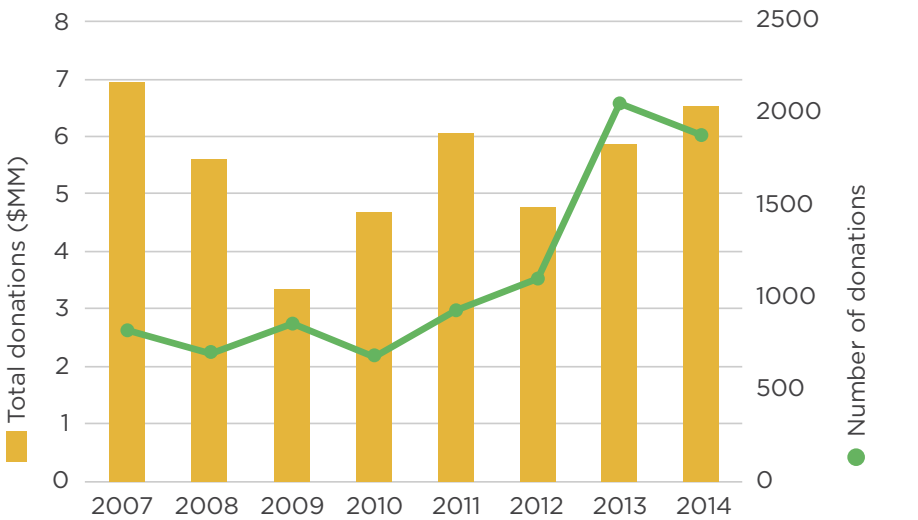
Benchmarks reflect the performance of each market index based on HCF's specific target asset mix. Comparing actual results to the benchmark measures the value added by investment managers compared to the average market performance. HCF's investment policy is targeted at achieving a long-term investment return in the 7% to 9% range.

As illustrated, investment returns over the past seven years have been extremely volatile. Investment returns were very strong in 2014 with a 17.7% return compared to a 14.6% investment policy benchmark for the year. The seven-year annualized return, although below target, reflects a much lower volatility. As noted in the financial highlights, the current 10-year annualized return of 6.7% is nominally less than the lower end of the target range and reflects the challenging market conditions over the past decade. The five-year return at 12.1% has increased 7.5% from last year due to the weak 2009 results at -15.2% being replaced by the very strong 2014 results in the five-year average.

Donations

Donations to the Foundation are from individuals, corporations and other charitable organizations. Donors may contribute to named endowment or flowthrough funds or to the Board-directed Community Fund.

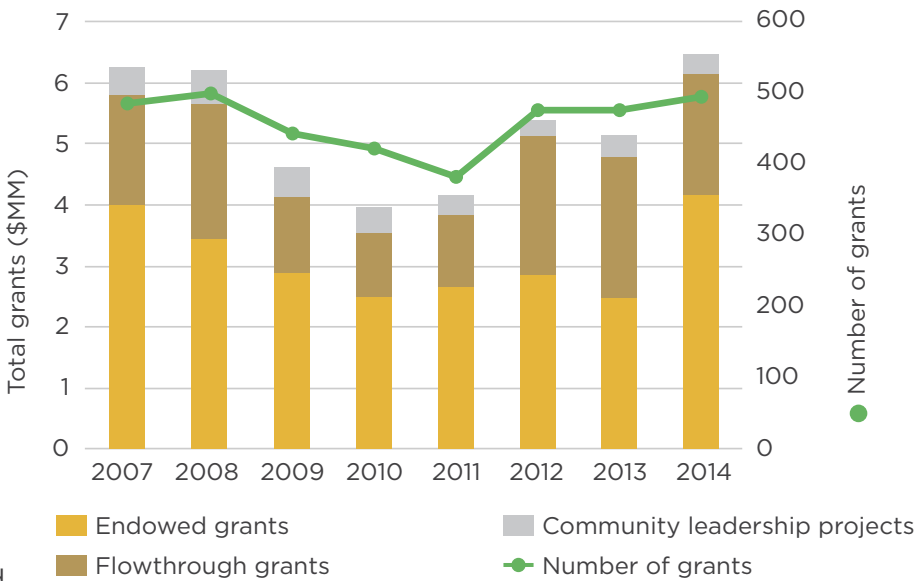
Total annual donations have ranged from \$3.4 million to \$7.0 million over the past eight years. Although fewer donations (1,895) were received in 2014 than in the previous year, this number continues to be significantly higher than it has been traditionally. The number of donations changes based on the number and nature of donor-sponsored events to raise money for their funds as well as on the level of in memoriam gift activity.



Grants

Grants are made annually from both endowed and flowthrough funds. As flowthrough fund balances are granted in a shorter time period, granting from these funds can materially influence the total amount granted.

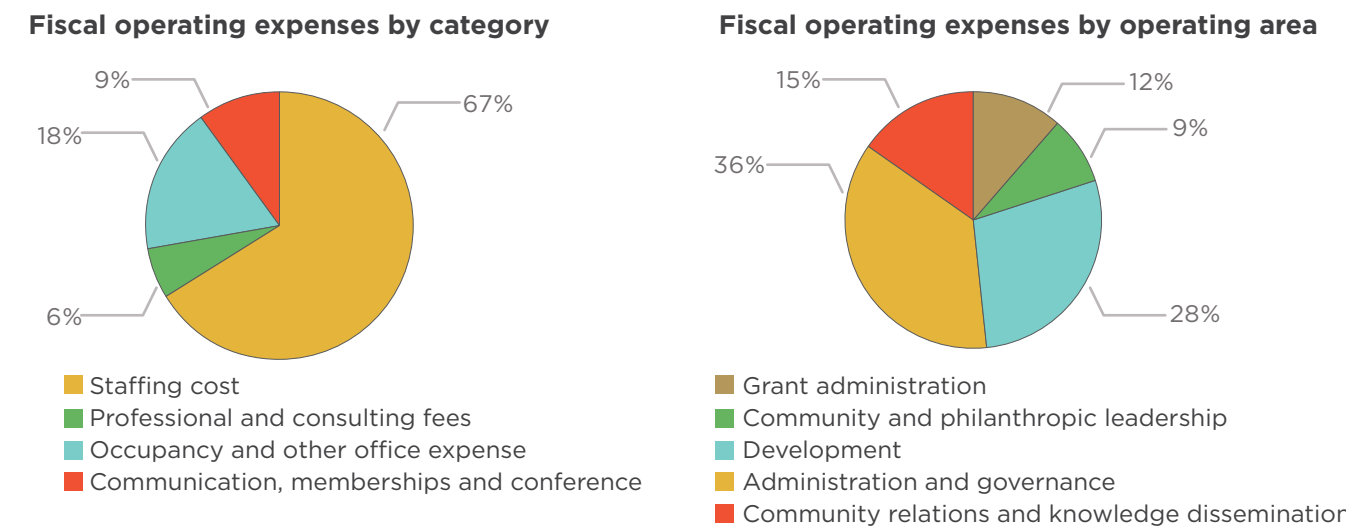
This year's granting at \$6.1 million represents the largest amount of financial support provided by HCF in its history. Grants and the cost of community leadership projects has ranged from \$4 million to \$6.5 million annually over the last eight years. Granting from endowment funds was reduced in 2009 and 2010 as a result of the decline in investment returns which a) lowered the asset base used for the granting calculation (currently 3.5% of the fund balances), and b) resulted in less income available to grant. Over the past three years, flowthrough granting has grown to more than 40% of total granting compared to approximately 30% on average over the previous five years.



Operations

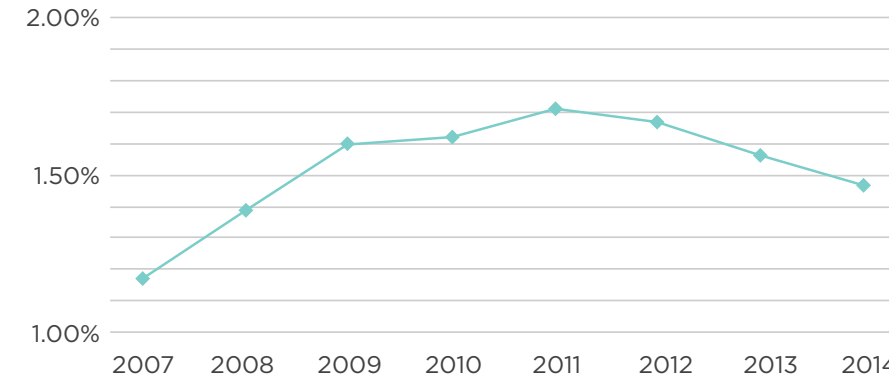
Operating expenses for the fiscal year ended March 31, 2014 total \$2.1 million, an increase of 5%. This increase reflects the costs of bi-annual professional development travel, initial costs supporting HCF's 60th anniversary, rebranding and website redesign. The Foundation has a staff of 17 under the direction of the President & CEO, who reports to an independent board of directors. Staffing costs represent 67% of HCF operating costs.

In addition to breaking out cost by type, operating costs are allocated to each of the Foundation's operating areas: granting, community and philanthropic leadership, community relations and knowledge dissemination, asset development, and administration and governance. Examples of community and philanthropic leadership include convening around the city's critical issues as described on page 18 of this report. It also includes fostering the growth of philanthropy by supporting other charities through sharing staff time and knowledge. Leadership costs include time and facility contribution to the Hamilton Roundtable for Poverty Reduction.



The Foundation's annual development expenses are not necessarily attributable to the donations received in that year. The nature of donations to the Foundation can result in costs preceding the receipt of the donation by several years (for example, donations through wills). As a result, consistent with the community foundation sector, operating costs are evaluated by a ratio of total operating expenses to average total assets. Ratios fall within a range depending on the size and stage of the community foundation's development.

Management considers the ratio of 1.5% (1.6% in 2013) to be within an acceptable range compared with benchmarks established in the community foundation sector. We continue to monitor both the actual results and the benchmarks on an ongoing basis.



Impact investing update

Hamilton Community Foundation continues to put more of our assets to work for social as well as financial return. By setting aside a portion of our endowment for impact investing, we can significantly multiply the Foundation's positive effect on our own and other communities while supporting sustainable and socially relevant investments aligned with our mission.

Locally, the Hamilton Community Investment Fund offers loans that work alongside granting for impact and "recycles" capital for charitable use. This year HCF has supported:

- Operations of Hamilton's first grocery co-operative
- Purchasing land for a greenhouse that will support a variety of healthy food programs
- Increasing the fundraising capacity of a local artist-run centre

Potential future projects include affordable housing development and land/building acquisition for a local charity's multipurpose facility.

The balance of our impact investing portfolio is seeded by the Young Fund, and includes \$30 million invested in public market securities where environmental, social and governance (ESG) practices are an important investment consideration. It also includes direct investments in funds and organizations that seek social and

financial returns where, this year, commitments have been made to three organizations:

- **Renewal 3**, a social venture fund investing in early growth stage businesses in the organic and natural food, green products and environmental and social innovation sector in Canada and the U.S.
- **Mercer Private Investment Partners III-Sustainable Opportunities**, a global portfolio of highly rated private market funds that provides investments expected to benefit from the global shift towards a lower carbon economy and the need to address resource scarcity issues.
- **Trillium Housing Trust**, established to help low-to-modest income Canadian families gain homeownership by developing affordable housing.

Together with prior commitments to Sarona Frontier Markets, Resilient Capital and Greenchip Global Equity, these commitments total \$5.8 million of the \$7.0 earmarked for direct impact investment.

| Source | Impact Investment | Amount |
|----------------------------------|---|--------------|
| The Young Fund | ESG Public Market Public market investments using investees' environmental, social and governance practices as important investment considerations. Managed by Guardian Capital | \$30 million |
| | Direct impact Investment in funds and organizations made intentionally to produce both positive social and/or environmental returns while also seeking financial return | \$7 million |
| Community Fund | The Hamilton Community Investment Fund Invests in and provides loans to Hamilton charities, not for profits and social enterprises. Our partner is the Community Forward Fund, a Canadian non-profit specializing in financing for non-profits and charities | \$5 million |
| Total impact investing portfolio | | \$42 million |

Turning Knowledge into Strategic Action

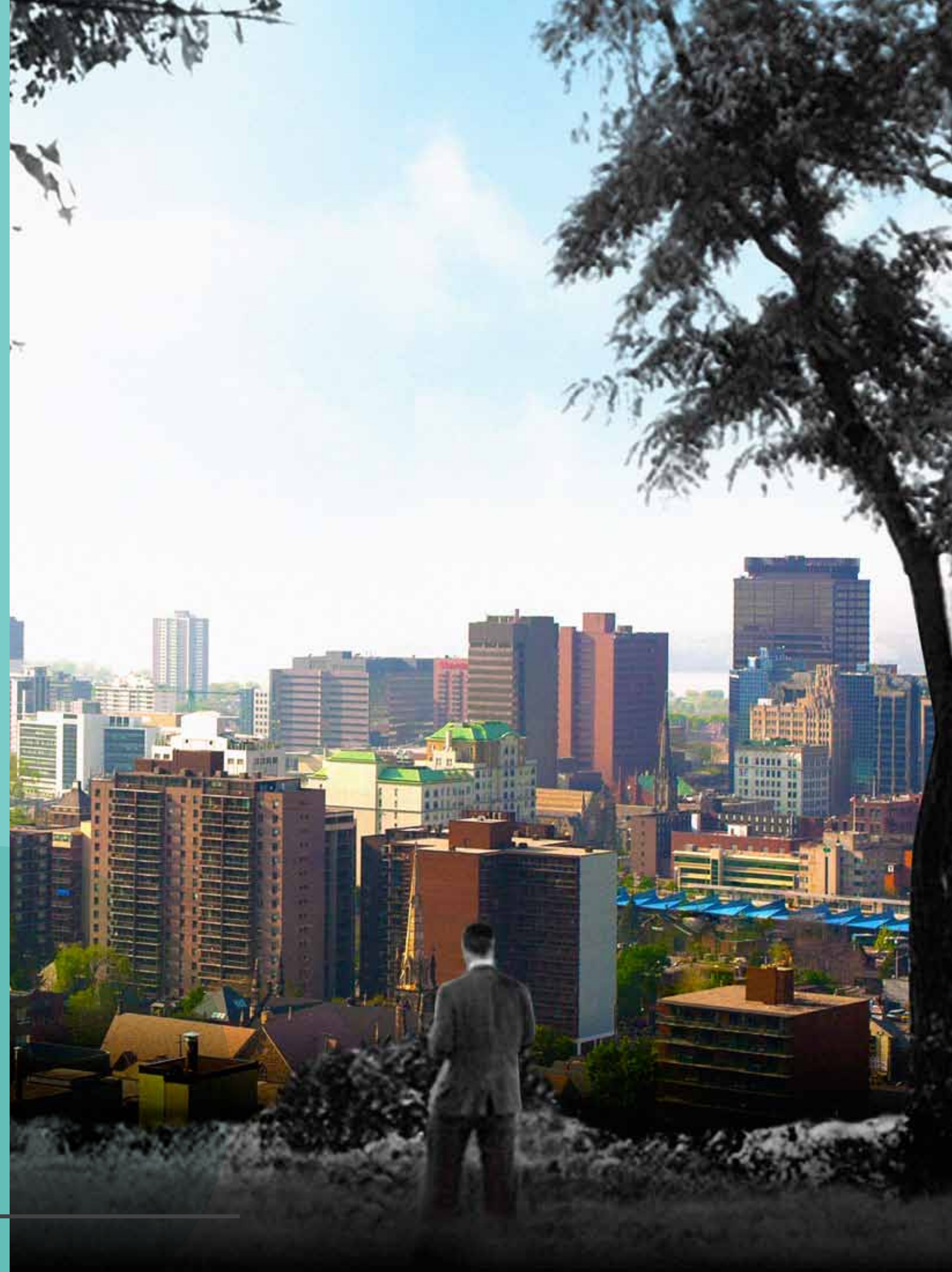
2004 to today It was in this decade that all the Foundation's research and experience pointed to one pervasive barrier to Hamilton's vitality: poverty. HCF's board decided to tackle this complex, long-term problem head-on, focusing the bulk of its discretionary granting on this single issue. It was a bold approach, unheard of in the community foundation world at the time.

Since that time, the Foundation has invested some \$10 million into reducing and preventing poverty through strategic grantmaking and community leadership. We established the Hamilton Roundtable for Poverty Reduction to address policy-level changes while stressing the pivotal role of neighbourhoods in strengthening the city—an approach since adopted by the City of Hamilton.

As we look back and look ahead on this 60th Anniversary, we remain committed to addressing Hamilton's toughest challenges, ever mindful that the gifts entrusted to us over six decades are a powerful force for good.

Based on research, community knowledge, best practices in philanthropy—and Hamiltonians' deep love for their city—we will continue to steer a course that puts those resources to work for Hamilton's vitality.

60
years



Board members, volunteers and staff

Board Advisory Committees 2013-2014

Hamilton Community Foundation’s work is supported by both standing committees of the Board of Directors and board advisory committees. Membership of the board advisory committees includes both board members and a wide range of community volunteers whose expertise we rely on and appreciate. Standing committees of the board include: Governance and Board Effectiveness, Development, Finance and Investment, and the Impact Investment Advisory Committee.

Audit Committee

Mario Frankovich, MBA, CFA, *Chair*
Cameron J. Beatty, CPA, CA
Steve Borsellino, CMA
Brent Foreman
Paul Lee-Chin

Chaney-Ensign Bursary Fund

Sandra Stephenson, *Chair*
Terry Costello
Jill Davren
Myrna Kelly
Dr. John Misale
Nancy Rundle

Community Fund

Jeremy Freiburger, *Chair*
Dr. Jane Aronson
Suzanne Brown
Angela Dawe
Treena Ley
Tom Marlor
Teresa Smith
Marita Zaffiro

Community Health, Education and Research Fund

Dr. Jane Aronson, *Chair*
Paul Armstrong
Marion Emo
Dr. Gianni Parise
Dr. Jenny Ploeg
Dr. Leila Ryan

Advisory Committee on Diversity and Inclusion

Dr. Jane Aronson, *Chair*
Matthew Green
Anju Joshi
Milé Komlen
Dr. Carolyn Rosenthal
Dr. Gary Warner

Edith H. Turner Foundation Fund

Renate Davidson, *Chair*
Dorothy Bartalos
Timothy Bullock
Sondra Cornett
Terry Horne, *Honourary Member*

Geritol Follies Performing Arts Bursary Fund

Kathy Brown, *Chair*
Jeanne Scott*
John Simpson

*deceased April 2014

Hamilton Spectator Summer Camp Fund

Jane Allison

McCallum, McBride Fund Advisory Committee

John McCallum, *Chair*
Kevin Beattie
Carole Capling
Linda Hughes
Debbie-Ann Rashford

Nominating Committee

Dr. Gary Warner, *HCF Past Chair/Committee Chair*
Mayor Bob Bratina, *City of Hamilton*
Police Chief Glenn De Caire, *Hamilton Police Service*
Dana Robbins, *Chair, United Way of Burlington & Greater Hamilton*
Louise Dompierre, *Chair, Hamilton Chamber of Commerce*
Michelle Stark, *President, Hamilton Law Association*
Paul Gibel, *Board Chair, Hamilton Community Foundation*

Ontario Endowment for Children & Youth in Recreation

Matthew Green*, *Chair*
Cecelia Carter-Smith
Nicki Glowacki

Katherine Houston
Greg Maychak
Evelyn Myrie
Kelly Scott
** resigned during the year*

United Nations Bursary Award Fund

Brian Reid, *Chair*
Gail Rappolt

Women 4 Change Founders Advisory Committee

Beth Webel, *Chair*
Annette Aquin
Lisa Dalia
Renate Davidson
Lori Dessau Tauber
Susan Goodman

Kathryn Lakin
Sheree Meredith
Sandy Schwenger
Sandra Stephenson

Youth Advisory Council

Stephanie Bertolo, *Co-Chair*
Ashley Yu, *Co-Chair*
Nora Abdalaal
Batoul Al-waadh
Amna Ali
Muhammad Ali
Zoé Haskell-Craig
Rakhshan Kamran
Heather McBrien
Salma Mobasher
Hira Nadeem
Sachin Patel

Kishan Patel
Olivia Prunean
Shahbano Syed
Hannah Tobias-Murray
Arjuna Yusuf
Becky Schmor, *Co-Chair**
Justine Williams, *Co-Chair**
Samna Aziz*
Tony Borsellino*
Mark Bursey*
Elliot Davis*
Nida Mahmood*
Haman Mamdouhi*
Nadia Nadeem*
Austin Strutt*

** completed term June 2013*

Board of Directors 2013-2014

Paul Gibel, FCPA, FCA
Partner, Grant Thornton
Board Chair

Dr. Gary Warner, CM
Former Director, Arts & Science Program, McMaster University
Past Chair

Marita Zaffiro, BScPhm, MBA
President & CEO, Marchese Health Care
Treasurer

Dr. Jane Aronson
Director, School of Social Work, McMaster University

Dr. Justin Cooper
President Emeritus, Redeemer University College

Tyler Cowie
CEO/Creative Director, factor[e] design initiative

Dr. Patrick Deane
President & Vice Chancellor, McMaster University

Brent J. Foreman, BA, LL.B
Partner, SimpsonWigle LAW LLP

Jeremy Freiburger
Chief Connector & Cultural Strategist, CoBALT CONNECTS

Anju Joshi
Associate (Teaching) Professor, Department of Health, Aging & Society, McMaster University

Stephen Kulakowsky
Partner, Core Urban Inc.

Paul Lee-Chin
Investment Advisor and Branch Owner, Mandeville Private Client Inc.

Ruth Liebersbach, BA, FCMA, C.Dir
Chief Financial Officer, McMaster Innovation Park

Tom Marlor
Deputy Chief of Police, Hamilton Police Service (retired)

Teresa Smith
President, Hamilton General Hospital

Beth Webel, MBA, CPA
Tax Partner, PwC

Matthew Green*
President & CEO, Integrated Active Living Inc.
**resigned from board Oct. 2013*

Stephanie Bertolo
Ashley Yu
Co-Chairs, Youth Advisory Council (ex-officio, non-voting positions)

Terry Cooke
President & CEO
Secretary of the Board

Volunteers 2013–2014

The Foundation is grateful to these dedicated volunteers and professionals who made a special contribution by assisting the Board and staff with special projects:

| | | |
|----------------------------|------------------------------------|---------------------|
| Patricia Amos | David Derbyshire | Sarah Murphy |
| Cameron J. Beatty, CPA, CA | Mary Lou Dingle | Marnie Paikin |
| Ian Bird | Dr. Jim Dunn | Steve Paikin |
| John & Sandra Black | Mario Frankovich | Dr. Leila Ryan |
| Steve Borsellino, CMA | Murray Hogarth | Nancy Rundle |
| Alan Broadbent | HRPR Roundtable and Working Groups | Glen Swire |
| Suzanne Brown | Paul Johnson | Dr. Brian Underdown |
| Dr. Jean Chamberlain | Dr. John Malloy | Dr. Gary Warner |
| Alan & Marlies Clark | Judith McCulloch | Gwyn Williams |
| Hugh Clark | Carolyn Milne | Terry Yates, FCA |
| Dr. Tom Deans | | Bill Young, Jr. |

Hamilton Community Foundation Staff

| | | |
|--|--|---|
| Terry Cooke President & CEO | Sharon Charters Manager, Grants | Melissa Ricci Adult Advisor, Youth Advisory Council |
| Annette Aquin , CPA, CA Executive Vice-President, Finance & Operations | Margaret Freeborn , CGA Manager, Accounting & Information Technology | Rose Taylor-Weale Administrative Assistant, Executive Office & Development |
| Grace Diffey , APR, FCPRS Vice-President, Community Relations | Morag Halsey Receptionist/Foundation Support Assistant | Tracy Varcoe Administrative Assistant, Finance & Community Relations/ Webmaster |
| Matt Goodman Vice-President, Grants & Community Initiatives | Tami Henderson Administrative Assistant, Grants | Hamilton Roundtable for Poverty Reduction: |
| Sheree Meredith Vice-President, Philanthropic Services | Pamela Lakin , CPA, CA Director, Donor Services | Tom Cooper Director |
| Jill Anderson Director, Development | Angel Li Junior Accountant | Jennifer Chivers Administrative Co-ordinator |
| Helen Callaway Co-ordinator, Donor Services | Anne Lupkoski , CAP-OM Corporate Secretary & Executive Assistant | Celeste Licorish Co-ordinator, Speakers Bureau |
| Auditors BDO Canada LLP | Investment Counsellors Connor, Clark & Lunn Private Capital Ltd. Guardian Capital Jarislowsky Fraser Limited | Bankers & Custodian Bank of Montreal and BMO Harris Private Banking |
| Solicitor Evans Sweeny Bordin LLP | | |

Our 60th Anniversary Sponsor—Pioneer Energy LP

A commitment to value beyond the pumps.

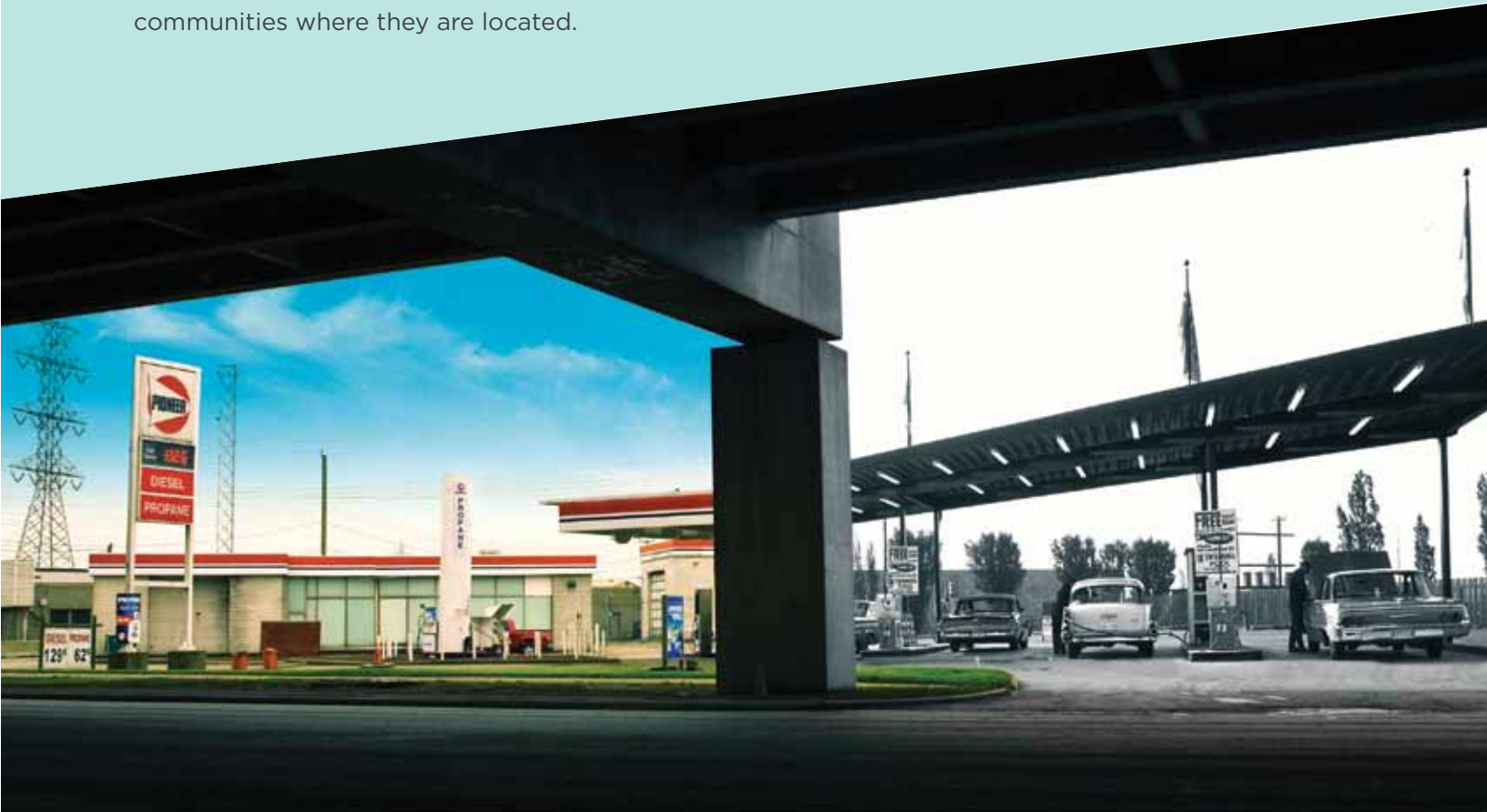
For close to 60 years, one of Hamilton’s outstanding corporate partners has been Pioneer Energy LP, founded by Murray Hogarth.

The homegrown company started in 1956 with one gas station on Upper James St. It’s now a multi-billion dollar corporation with gas/ convenience retail locations across Ontario, Manitoba and into Atlantic Canada—and it fosters a stellar commitment to giving back.

In 1999, Pioneer marked the millennium by establishing the Pioneer Energy Foundation at HCF and has since granted close to \$4 million focused on the needs of children and young adults. The company also created the Pioneer Petroleum Foundation Fund within HCF’s Community Fund to help deal with Hamilton’s most pressing needs. Pioneer also generously supports a range of other charities across the communities where they are located.

Pioneer paves the way for others to make a difference through community philanthropy. Programs at their retail outlets like *Cent a Litre Days*, *Give What You Can*, and *School Bucks Community Bucks* encourage customers and partners to join them in meeting local needs.

It’s hard to overestimate the value of Pioneer’s commitment to Hamilton and the other cities where the company does business. We thank them for their anniversary sponsorship, but even more for decades of support to our community—past and future



Contact Us

120 King St. W., Suite 700, Hamilton, ON L8P 4V2

905-523-5600 | Fax 905-523-0741

www.hamiltoncommunityfoundation.ca

information@hamiltoncommunityfoundation.ca

Charitable number: 13052 7427 RR0001