

LEGACY

ABACUS evolves

Equity, wellness and academic achievement are the three themes underlying the newest phase of ABACUS, Hamilton Community Foundation's initiative to increase the likelihood that young Hamiltonians will graduate high school and access post-secondary opportunities.

"We learned a lot from five years of ABACUS," says Rudi Wallace, Vice-President, Grants & Community Initiatives, "especially about the multiple influences on a child's educational success. Transitions, mental health, sense of belonging and a host of factors beyond academic support all play an important part. This is the context for ABACUS Phase II."

Since its 2016 launch, ABACUS has focused on the middle-school years as a crucial pivot point for students in going on to post-secondary education. Now, based on research and consultation, HCF has refined ABACUS to better achieve its goal. This includes:

- An increased focus on the transition into and out of middle school, especially the transition into Grade 9.
- Reading and numeracy in the earlier years.
- Incorporating components of overall social and emotional wellness.
- Addressing the needs of students historically underserved in the education system, including those who are Indigenous, Black, racialized, Two-Spirit and LGBTQIA+ among others.

The pandemic interrupted learning for many students; ABACUS Phase II targets reading and numeracy where this interruption is more pronounced through a pilot for students in Grades 4 and 5. It also focuses on the transition out of middle school and into high school with support for students through Grade 9 and into Grade 10.

"ABACUS Phase II reflects the importance of continually adapting to changes in the educational landscape to serve Hamilton's students," says Rudi. "It's deeper to address the overall wellness of students, especially those who face the most systemic barriers, and wider to bring in the 'edges' of the middle-school years and produce the best opportunities for graduation and post-secondary access."

Learn more by visiting [ABACUSatHCF.ca](https://www.abacusathcf.ca)

Crossing borders for impact

A recent impact investment from Hamilton Community Foundation will fund health technology companies that support women, children and adolescents, and help make health systems more resilient.

The Women's and Children's Health Technology Fund is an investment offering from Cross-Border Impact Ventures (CBIV), a Toronto-based impact investor in transformative health technology companies. Using a gender lens, it focuses on medical device, diagnostic and digital health companies based in North America, Europe and Israel, as well as on commercial stage companies in emerging markets with global technology transfer potential.

CBIV monitors progress and has set a target for its investments: 500,000 lives saved and improvements in the lives of 10 million underserved women and children in emerging markets.

Impact investments are public and private investments intended to create positive impact beyond financial returns. HCF invests in local, national and international funds as part of its impact investment portfolio and is one way the Foundation is working to align its assets with its mission.

"Not only does this fund support women and children," says Annette Aquin, Executive Vice-President of Finance & Operations, "but it's also female led, a rarity in private equity."

Honouring the passion of a lifetime

Marguerite Cino wanted to make a difference in the lives of children.

As a teacher, librarian, principal and supervisor of staff development, she did that through her career with the Hamilton-Wentworth District School Board. Now, her wish to help young people will live on through the Marguerite M. Cino Fund at HCF.

“Marguerite never had children of her own, but had a special passion for young children and teens,” says her husband Sam Cino. “She knew that not all children have the same opportunities and she wanted to change that.”

Marguerite Cino



Sam is well known for both his extensive volunteer leadership and as proprietor of Hamilton’s Lo Presti’s and Maxwell’s restaurants. He credits their lifelong friend Vincenza Travale, a past-chair of the Foundation, for suggesting a fund at HCF as the easiest way for Marguerite to accomplish her legacy.

“Marguerite was a very special lady who achieved so much as an educator and in business,” says Sam, “but she was also a very quiet person. This fund, supporting initiatives for children and youth, speaks for her and the things she cared about.”



In case you missed it

HCF’s Pandemic Response Fund continues to meet Hamilton’s evolving needs — particularly those who have been especially affected by COVID-19. Recently the fund provided a fifth round of grants, totalling \$380,000 to 22 organizations, to address the ongoing level of community need and financial pressure on frontline organizations. This brings the amount granted from the PRF to more than \$4 million since it was established in March 2020.

You can find a full list of these grants and project descriptions at hamiltoncommunityfoundation.ca

Other grant news

- The Edith H. Turner Foundation Fund recently provided grants of over \$660,000 to 45 organizations supporting children and youth, families, adults and seniors in Hamilton who are experiencing marginalization.
- In collaboration with seven other local community foundations, HCF helped to facilitate the Canadian Healthy Communities Initiative (CHCI), through which the federal government provided \$325,000 to six Hamilton organizations. CHCI helps communities adapt to the COVID-19 pandemic and create safe ways for residents to access services and enjoy the outdoors.

Grants at a Glance

Worth the wait

Tucked inside the Bernie Morelli Recreation Centre is a coffee shop with a name leaving no doubt that you’ll be welcome.

In 2019, a grant from HCF supported the Inclusion Coffeehouse as a social enterprise, but the pandemic created multiple delays in its opening. This spring, Inclusion Coffeehouse is officially ready to serve the public.

The Inclusion Coffeehouse is operated by the core members of L’Arche Hamilton, a local organization that celebrates the gifts of people with intellectual disabilities. The café provides an opportunity for the core members to engage in all aspects of the business, including procuring goods for sale, baking, setup, serving, cleaning and financial management.

Its broader goal is to create an accessible, affordable café space in the South Sherman neighbourhood where everyone belongs — and so far, the feeling is mutual. “We have been so encouraged by the outpouring of support the city has shown for this project,” says Marianne Mulders, Fundraising Advancement at L’Arche Hamilton.



What the past teaches us

Understanding the past helps us face the present and frame the future. A recent series of grants from HCF is supporting the study of history related to Black, Indigenous, people of colour (BIPOC), Two-Spirit and LGBTQIA+ and Jewish communities.

As part of its consultations aimed at supporting equity-deserving communities, the Foundation heard about the importance of literacy and education through studying history. A grants call focusing on this issue resulted in funding for programs including:

- Stories of the Black community in Hamilton using griot format (African drumming and dance in combination with oral storytelling) from Afro-Canadian Caribbean Association.
- Learning at Glendale Secondary School about Hamilton’s Stewart Memorial Church and its vital role in the lives of Hamilton’s Black community.
- Settler Reflection Series workshops that help participants understand the historical and current impact of colonialism in Canada from Righting Relations Hamilton Circle.

In total, 14 initiatives were funded through this program. A complete list is available at hamiltoncommunityfoundation.ca

Getting the most out of LRT

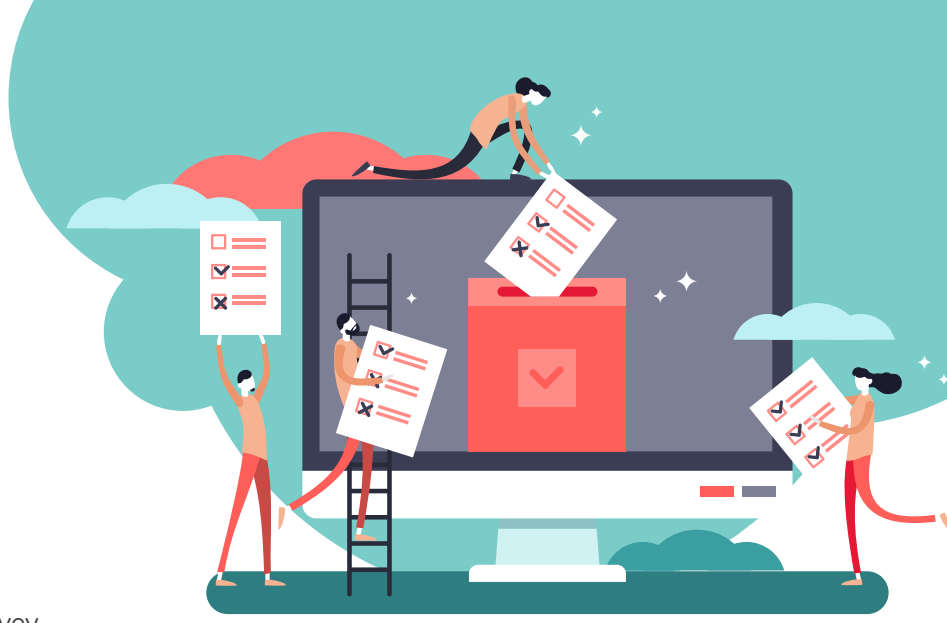
Better transportation. Employment opportunities. Affordable housing. These are just a few aspects of a vision cast by Hamilton Community Benefits Network (HCBN) for how our city will make the most of Light Rail Transportation (LRT) when it comes to Hamilton.

A grant from HCF is supporting an HCBN-led community engagement program that will “carve out a voice for residents” and ultimately make a case to press for substantial gains as the city’s LRT project gets underway. This involves engaging with community members along the LRT corridor both to educate them about community benefits and to gather their feedback. HCBN is also focusing on communities that are often left out of the decision-making process including BIPOC communities and people with disabilities.



In February, HCBN distributed a survey and plans a variety of workshops and events to reach community members.

Donor Survey: The results are in!



Impact, innovation, convenience and accountability – they’re the key reasons why over 98 percent of donors say they are *very satisfied* or *satisfied* with giving through Hamilton Community Foundation.

The results come from HCF’s recent donor survey. Some other items of note:

- Donors place the highest importance on the impact their donation makes (88.9 percent rating it *very important*) and how effectively HCF uses it (84.2 percent rating *very important*). They also indicated high satisfaction with both, with *very satisfied* or *satisfied* ratings of 90.6 and 93.9 percent respectively.
- Some 90 percent of respondents said they were *very likely* or *likely* to recommend the Foundation to a friend. Their reasons fell into four themes: impact, innovation, convenience of making a difference with HCF’s philanthropic advice, and confidence in HCF’s sound financial management.

“Anyone can have a real impact through a community foundation,” said one of many respondents who took the time to add their comments. **“HCF makes it easy to be part of change and community building.”**

Read more survey results at hamiltoncommunityfoundation.ca

HAMILTON COMMUNITY FOUNDATION

120 King Street West
Suite 700, Hamilton ON
Canada L8P 4V2

Tel. 905.523.5600

Fax. 905.523.0741

@HamCommFdn

hamiltoncommunityfoundation.ca



RETURN POSTAGE GUARANTEED
PORT DE RETOUR GARANTI

We respect your privacy

Hamilton Community Foundation does not rent, sell or trade its mailing list. Please contact us at any time if you do not wish to receive further mailings from us. hamiltoncommunityfoundation.ca/privacy